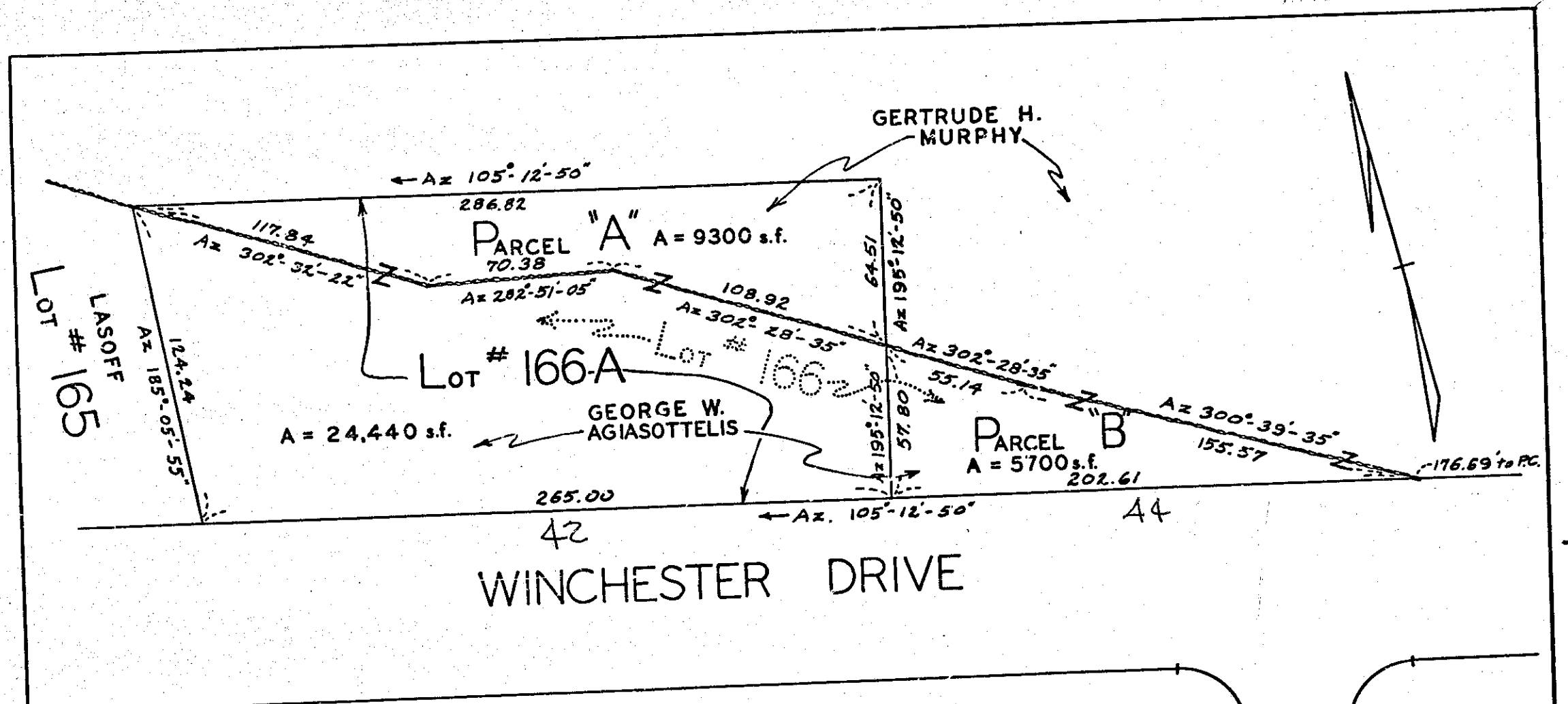


14.5 18.12



FEE 3.00
BY P

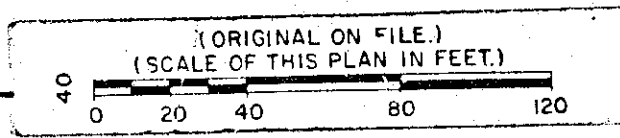
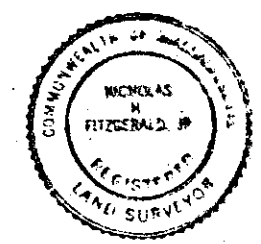
Middlesex Registry of Deeds, So. Dist.
CAMBRIDGE, MASS.
Plan number 361 of 1964
Rec'd AUG. 11 1964 at 3:35 P.M.
With DEED Doc. No. 320
GERTRUDE W. AGIASOTTELIS
GERTRUDE H. MURPHY
Recorded, Book 10607 Page 92
Attest: *[Signature]*

PLAN OF LAND
IN
LEXINGTON, MASS.

SCALE: 1" = 40' SEPT. 7, 1962
N.H. FITZGERALD, JR. SURVEYOR
WINCHESTER, MASS.

LEXINGTON PLANNING BOARD APPROVAL
UNDER SUBDIVISION CONTROL LAW NOT
REQUIRED.

[Signatures]
ENDORSED, 17 September 1962 THE
ABOVE BEING A MAJORITY OF THE BOARD



1" = 50'