

TABLE OF TIE RODS

PIPE SIZE	TIE ROD NO.	TIE ROD DIA.
6"	2	1/2"
8"	2	5/8"
10"	2	3/4"
12"	4	3/4"
16"	6	3/4"
20"	10	3/4"

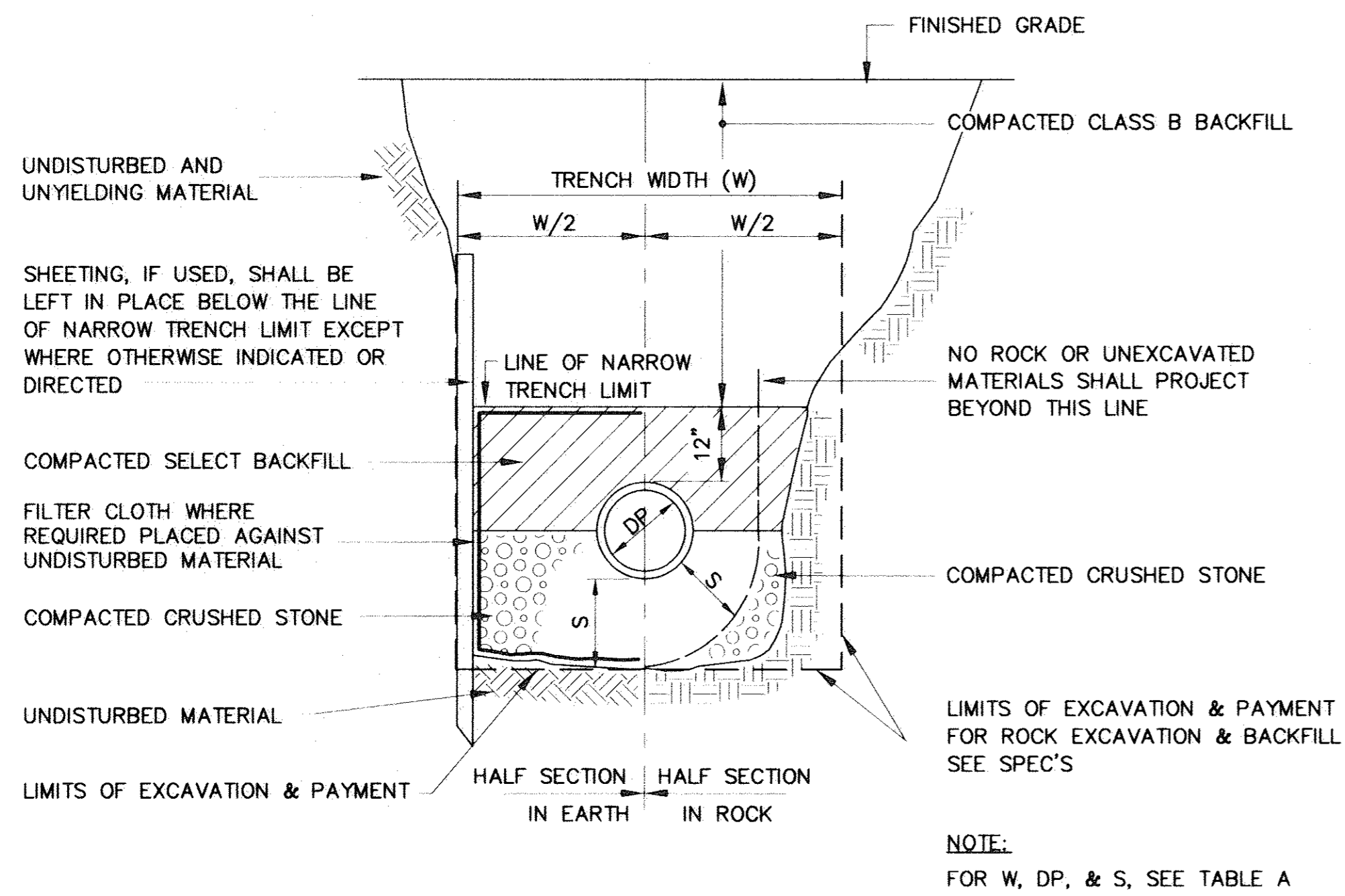
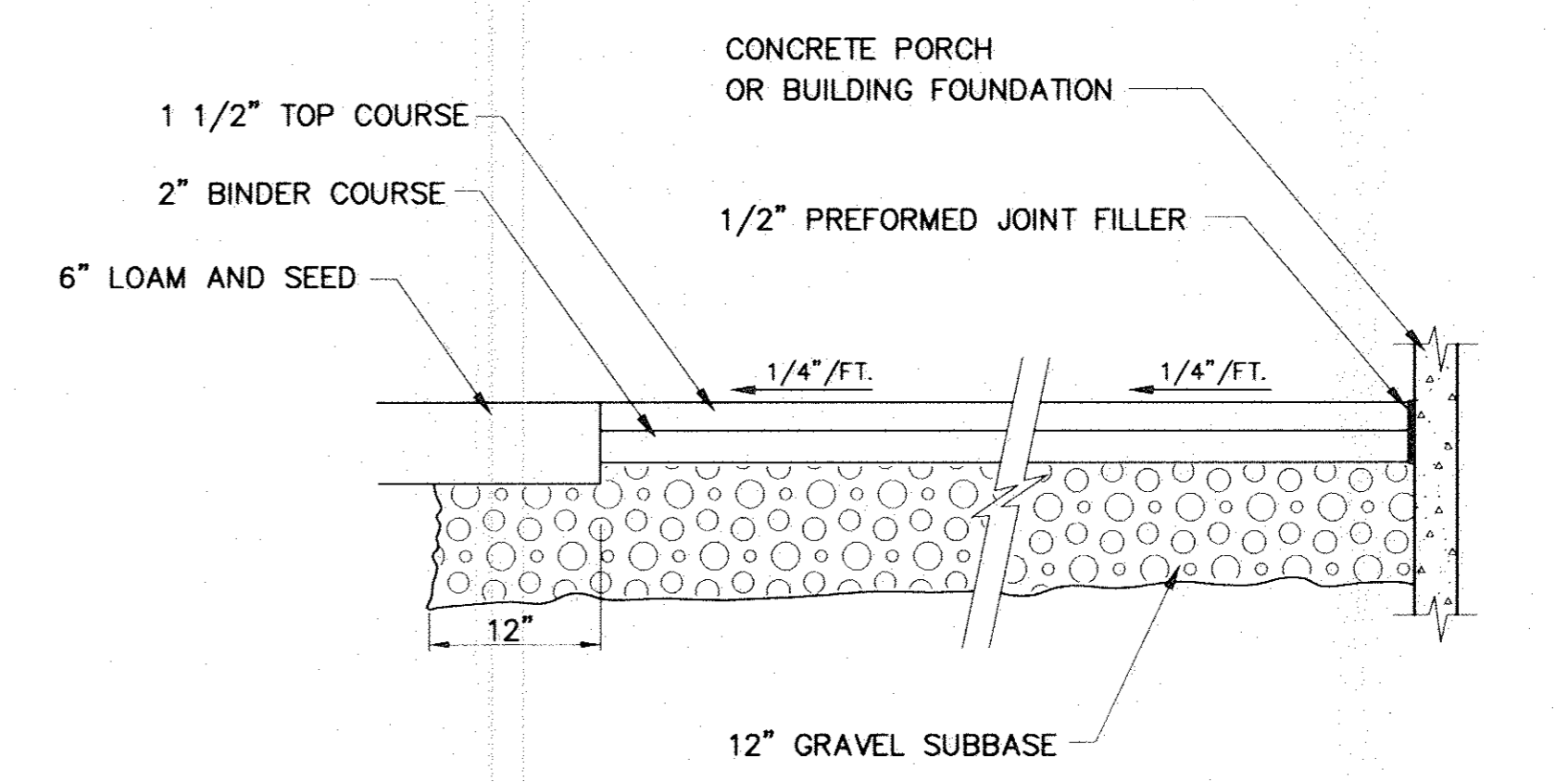
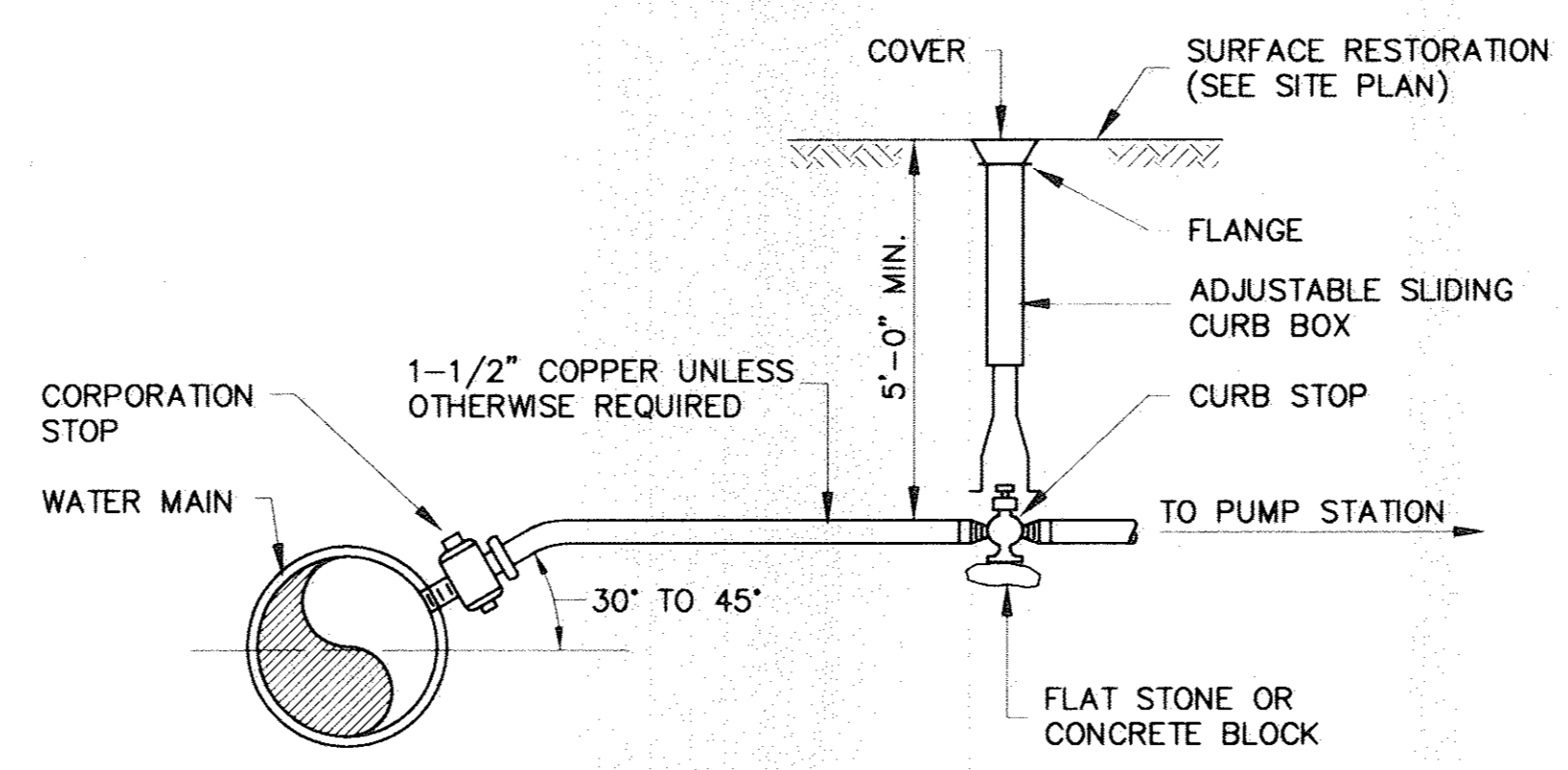
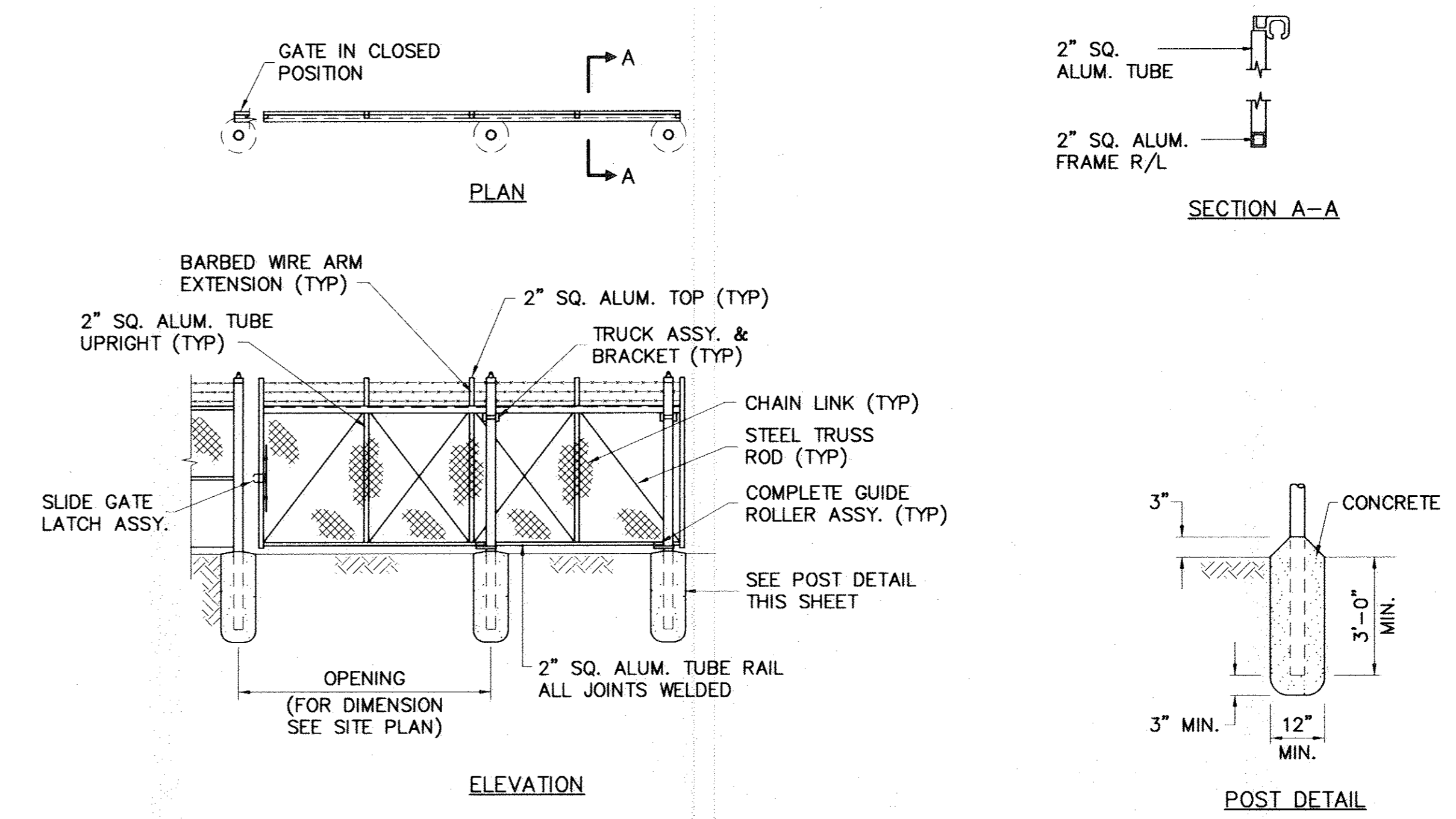
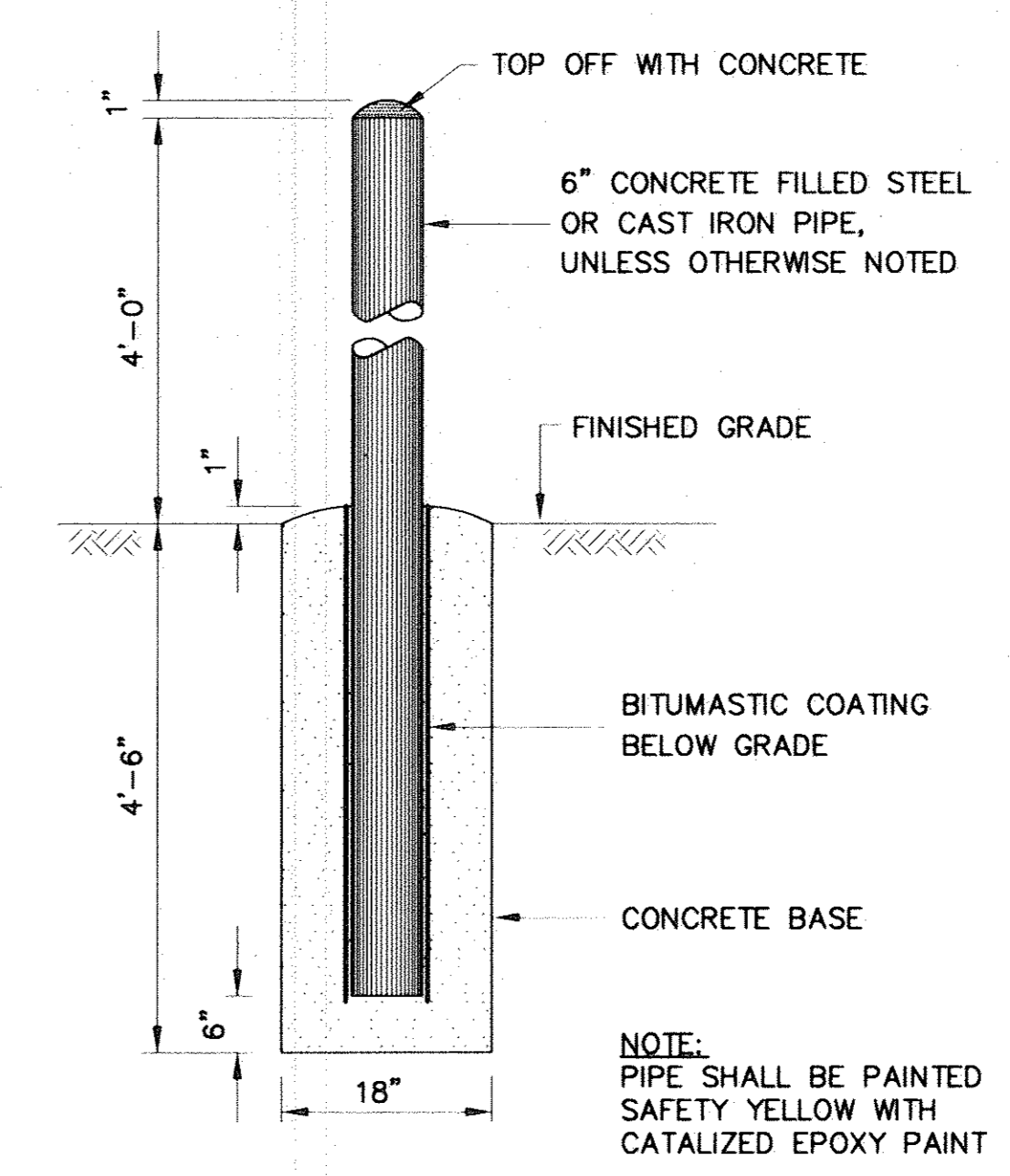
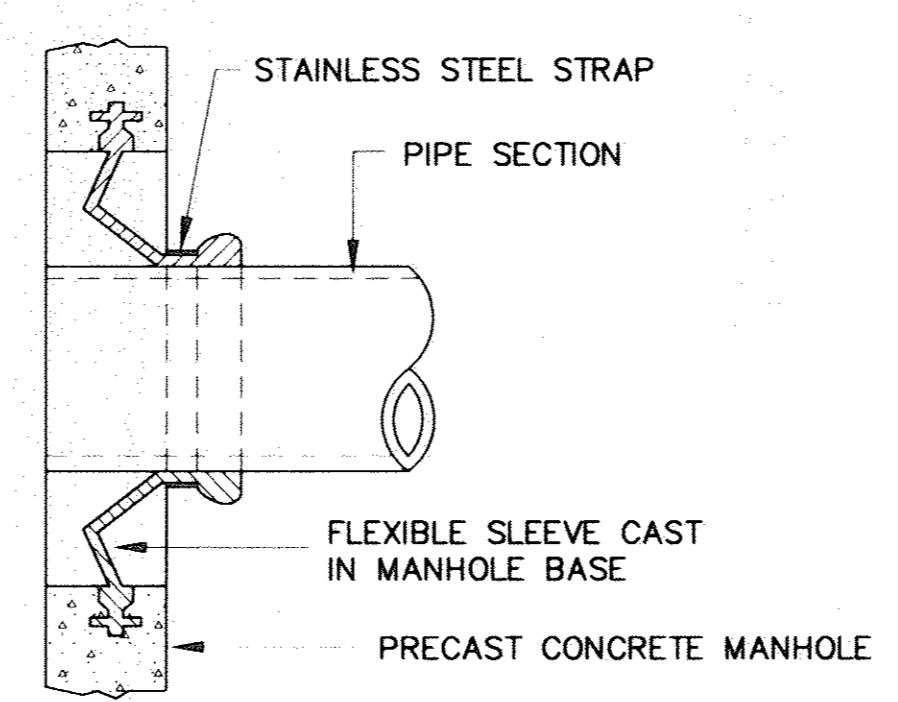


TABLE A

DEPTH TO INVERT	DIAMETER OF PIPE (DP)	MAXIMUM TRENCH WIDTH BELOW LINE OF NARROW TRENCH LIMIT (SHEETED OR UNSHEETED) (W)	MINIMUM CLEARANCE (S)
0-12'	TO 18"	5'	6"
OVER 12'	TO 18"	7'	6"
OVER 12'	21"-36"	7'	7-1/2"



Weston & Sampson
ENGINEERS, INC.

Five Centennial Drive, Peabody, MA 01960-7985

REVISIONS

No.	Date	Dr. By	Ck. By	App. By	Description
2	5/95	M.R.K.	M.L.M.	F.W.Y.	REVISED FOR RECORD DRAWING
1	7/791	S.G.L.	M.L.M.	P.M.S.	GENERAL REVISIONS

DATE: 1/15/92

A P P R O V E D

Peter M. Smith
REGISTERED PROFESSIONAL ENGINEER

TOWN OF LEXINGTON, MASSACHUSETTS
DEPARTMENT OF PUBLIC WORKS
NORTH LEXINGTON MAIN PUMPING STATION

DETAILS

SCALE	CONTRACT	JOB NO.	ICK BY	APP BY
NOTED	92-1	9065	S.M.L.	P.M.S.

CADD NO. RDET-6

FILE NO. 69-57

RECORD DRAWING

SHEET 8 OF 42