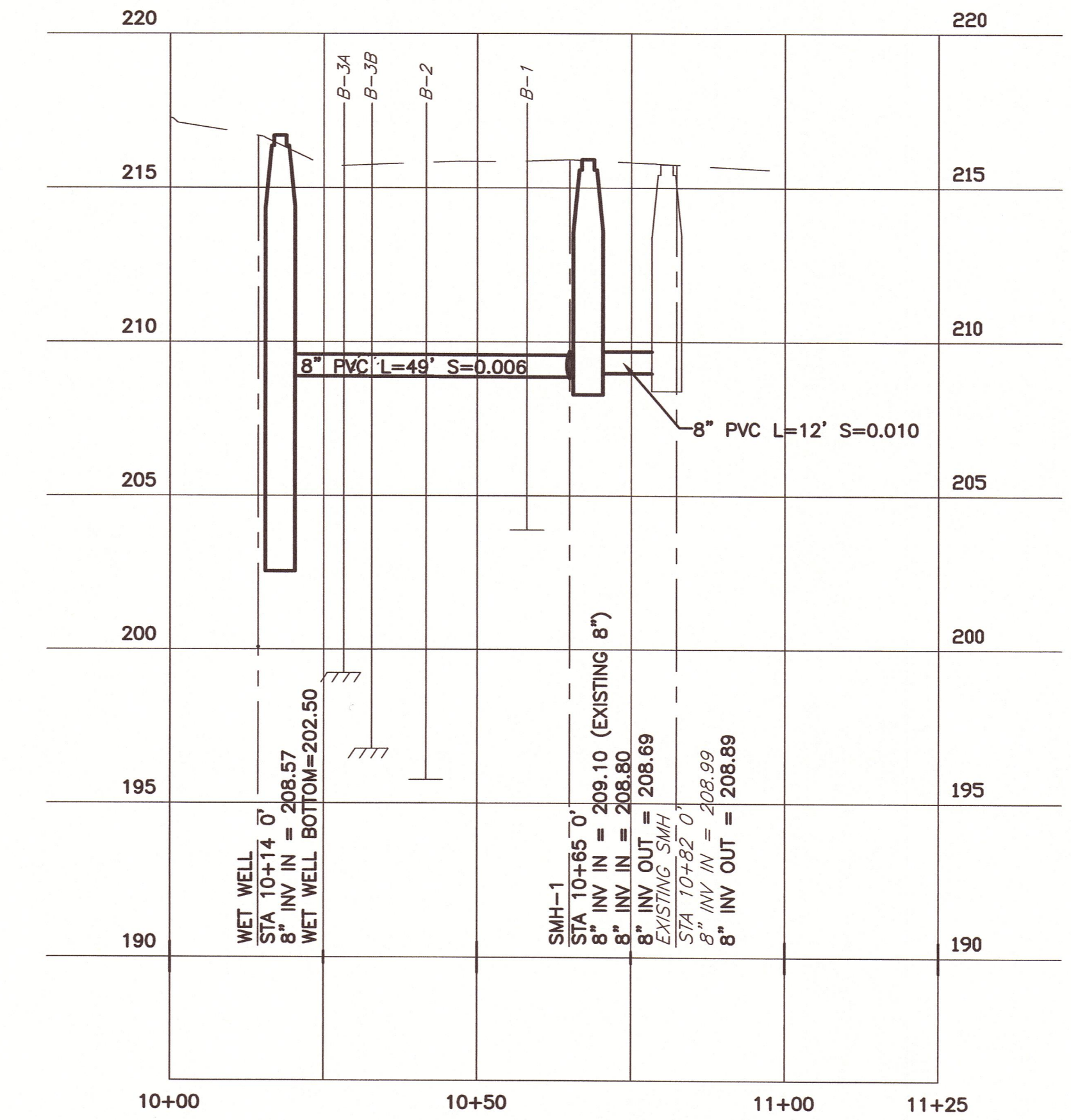
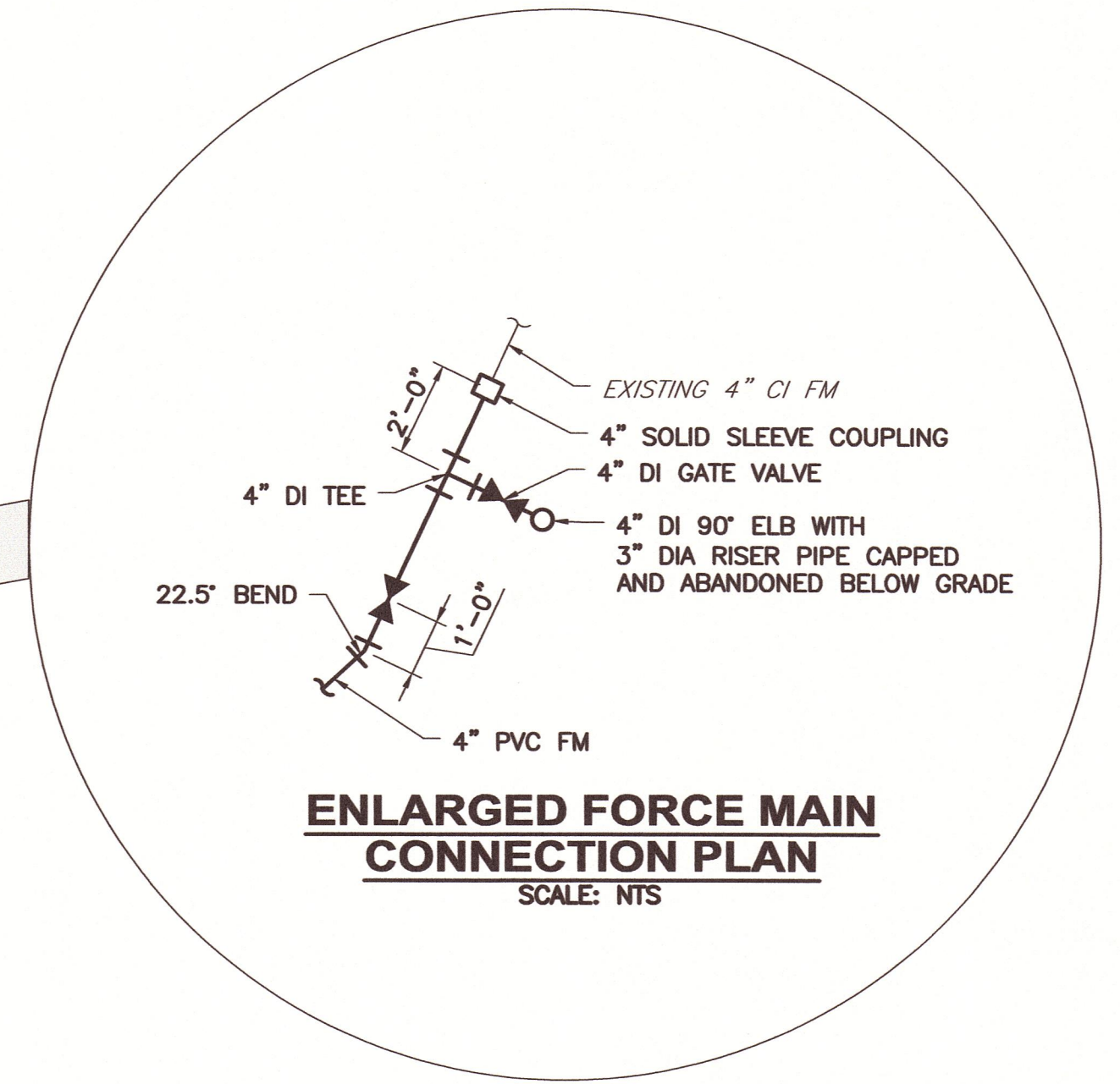
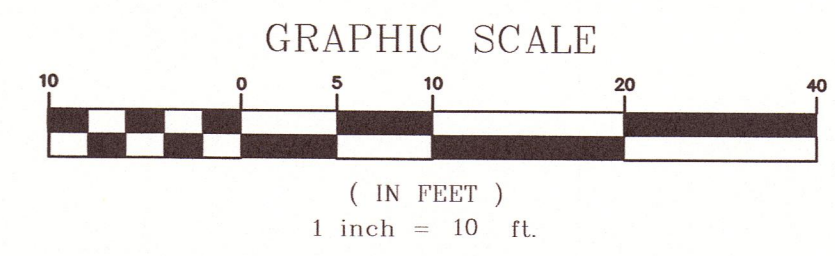


PROPOSED SITE PLAN
SCALE: 1"=10'



PROFILE
SCALE:
VERT=1"=4'
HORIZ=1"=20'



- NOTES:**
1. DURING EXCAVATION FOR THE PUMP STATION THE BURIED ELECTRICAL CABLES WERE NOT ENCOUNTERED. THEY WERE FOUND WHILE MAKING THE GAS SERVICE CONNECTION AT THE 2" GAS MAIN.

DESIGNED BY: ALK/BAY	ISSUED FOR BID	NO.	DATE
CAD COORD: SCV	RECORD DRAWINGS	KMO	11/14
CAD: SCV	CHECKED BY: KRO	BAY	07/16
DATE: 11/14	APPROVED BY: KMO		
NO. 10	DATE: 11/14		
	PROJECT NO: 12938A		

THESE RECORD DRAWINGS HAVE BEEN PREPARED, IN PART, ON THE BASIS OF THE INFORMATION COMPILED AND FURNISHED BY OTHERS. THE ENGINEER WILL NOT BE RESPONSIBLE FOR ANY ERRORS OR OMISSIONS WHICH HAVE BEEN INCORPORATED INTO THIS DOCUMENT AS A RESULT.

WRIGHT-PIERCE
Engineering a Better Environment
Offices Throughout New England
888.621.8156 | www.wright-pierce.com

TOWN OF LEXINGTON, MA
BRIGHAM ROAD WASTEWATER
PUMP STATION UPGRADE

PROPOSED SITE PLAN AND PROFILE

DRAWING
C-3