



Lexington Conservation Caring for our public land

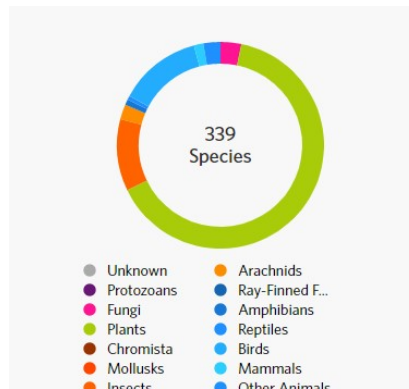
Community Programs



City Nature Challenge (CNC) Success!!!

Lexington made **921 OBSERVATIONS** documenting **339 SPECIES** spanning from fungi, plants, reptiles, birds, and more between 4/29 and 5/2.

Good Job to all 51 participants- see you next year!



Land Management

Willards Woods Public Charrette

June 14th @ 7:00 PM

Please join us for the first public Charrette for Willard's Woods to discuss



and provide input on design and engineering details for a potential UA trail and associated parking. This will be held remotely [via Zoom](#).

Please join us for a discussion on how we can best manage Willards Woods. Your Feedback and personal experiences at the property are invaluable.

[Follow this project here](#)



Chiesa Farm Public Charrette

June 21st @ 7:00PM

Please join us for the first public Charrette for the Chiesa Farm Field Management Plan to discuss and provide input on the fields at Chiesa Farm. This will be held remotely [via Zoom](#).

[Follow this project here](#)

Please join us for a discussion on how we can best manage Chiesa Farm fields. Your Feedback and personal experiences at the property are invaluable.

Parker Meadow Trail Closures

Click [HERE](#) to view the final concept plan

Follow along on the progress of the project [HERE](#).

All internal trails at Parker Meadow are closed during construction (red trails on map below). ACROSS route A is temporarily rerouted during this time (green dashed line on map below) to follow Revere Street from the bike path to connect to Hancock Street.



Construction Updates:

- **5/3/2022:** Boardwalk extension began and work completed at overlook. Surveyed trail location between Bridge B and Bridge C.
- **5/10/2022:** Boardwalk extension continued. Laid out trail and elevations between boardwalk adjacent to Bridge C and southwest boardwalk that meets the bikeway.

Improvements include:

- Creation of 1,697 feet of accessible trails
- Parking area improvements
- Creation of a viewing platform
- Interpretive Panel

Eye Spy in Nature



Spotted Lantern Fly

The Massachusetts Department of Agricultural Resources (MDAR) is asking the public to keep an eye out for the invasive pest known as spotted lanternfly (*Lycorma delicatula*) during the spring planting season due to the risk of egg masses being accidentally brought in on shipments of trees imported from other states.

Firefly Watch Community Science

Firefly Watch combines an annual summer evening ritual with scientific research. Join a network of community scientists around the country by observing your own backyard, and help scientists map fireflies.

Anyone in North America can participate in Firefly Watch. All you need to do is spend at least 10 minutes once a week during firefly season observing fireflies in one location (your backyard or in a nearby field). All firefly sightings—or lack thereof—are valuable!



[Learn how to Participate](#)

Upcoming Events!!!



Bee-come a Citizen Scientist

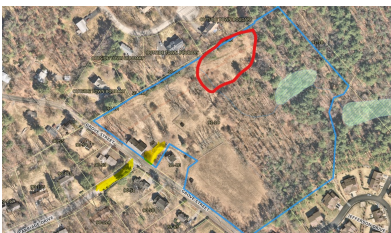
with Dr. Robert Gegear

June 11, 2022, 10-12pm

Learn how to identify bees with your smart phone through the Beecology app.

Join Conservation staff and Dr. Robert Gegear at Wright Farm to learn about local bee populations.

[Register Here!](#)





Citizens for Lexington Conservation Walks

[Register and find out
more](#)



Whipple Hill Family Walk

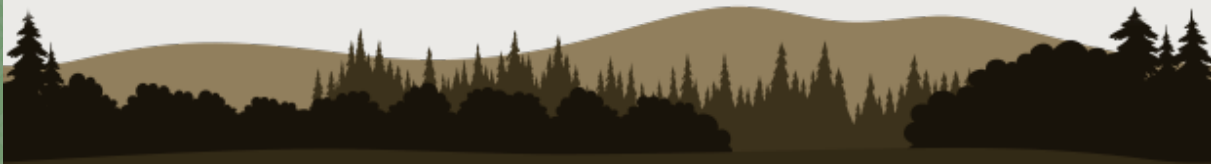
SUNDAY JUNE 12: 1:30-3:00 PM

Whipple Hill Conservation Area features Lexington's highest point, topping out at 374 feet above Boston Harbor.

Leader: Fran Ludwig

Each person needs a (free) ticket.

[Register Here](#)



Lexington Conservation
781-698-4532

[Email](#)
[Website](#)

Connect with us



Town of Lexington, MA | 1625 Massachusetts Avenue, Lexington, MA 02420

[Unsubscribe sdugan@lexingtonma.gov](mailto:sdugan@lexingtonma.gov)

[Update Profile](#) | [Constant Contact Data Notice](#)

Sent by landstewards@lexingtonma.gov in collaboration
with



Try email marketing for free today!