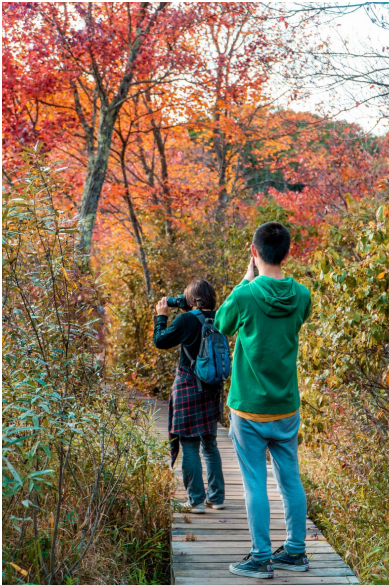




Lexington Conservation Caring for our public land

Community Programs



Observations needed!!! City Nature Challenge (CNC)

Lexington is officially participating in the 2022 City Nature Challenge (yay!). This is a WORLDWIDE event where we will document as many wild organisms as possible between

April 29th- May 2nd

Just take photos via the [iNaturalist app](#)! All observations during the timeframe within Lexington will be counted!

Learn more about CNC:

[Check out our website](#)

Contact the [Conservation Coordinator](#) to learn more!

Learn how to use iNaturalist

- Friday 4/29 4-6 PM at Whipple Hill (Summer St entrance)
[Register here](#)



Land Management

Click [HERE](#) to view the final concept plan

Parker Meadow Trail Closures

Follow along on the progress of the project [HERE](#).

All internal trails at Parker Meadow are closed during construction (red trails on map below). ACROSS route A is temporarily rerouted during this time (green dashed line on map below) to follow Revere Street from the bike path to connect to Hancock Street.



Construction Updates:

- **4/5/2022:** SumCo has completed the guardrails and handrails for overlook.
- **4/12/22:** Decking for Bridge A and abutting boardwalks is completed!
- **4/19/22:** Stone bench has been freed from the ground and SumCO, staff and CLC discussed relocation options.
- Completed decking for boardwalk abutting Bridge C.

Improvements include:

- Creation of 1,697 feet of accessible trails
- Parking area improvements
- Creation of a viewing platform
- Interpretive Panel

Eye Spy in Nature

A Festival of Birdsongs



Every spring and fall, billions of birds migrate through the US, mostly at night. Spring migration is the perfect time to discover the allure of birding.

Check out [Bird Migration maps](#) and see migration live in action



Some birds begin arriving in the Northeast in February and March, but May is the peak month, when songbirds travel from their wintering grounds in South and Central America to breeding grounds in the northern United States and Canada.

A fifth to a quarter of the migrants in Massachusetts are warblers. Their distinctive songs, small size and colorful plumage make warblers the stars of the spring migration for many.

Each day brings new waves of warblers, vireos, thrushes, tanagers and other migrants. Explore Lexington Conservation areas while birding with CLC this season. [Sign up HERE.](#)

See [Alive with Birds](#) and celebrate the wonder of birds through art at the Concord Museum.



No Mow May

Gardeners around the country are accepting the challenge of NOT MOWING all or a portion of their lawns for the month of May. The movement began in the United Kingdom, but is being embraced by gardeners in the United States and around the world including Lexington Living Landscapes (LLL) here in town!

What happens when you let your lawn grow? Non-grass plants in your lawn such as clover, violet, and dandelion have a chance to flower, providing early season food for bees and other pollinators emerging from winter hibernation.

[Read more here!](#)

Garlic Mustard:



A delicious invasive

Garlic-mustard was originally imported in the nineteenth century as a kitchen garden herb and salad green. It is most aggressive along roadsides and shady, moist, rich forests, and may form dense colonies.

For adventurous culinary foraging learn how to prepare [here](#) or try the pesto below.

If you are interested in pulling garlic mustard in your own yard or along your favorite hiking trail, please:

Pesto:

- 11 cups lightly packed garlic mustard leaves and tips, loosely chopped
- 1/4 cup pine nuts
- 1 garlic clove
- 1/3 cup grated parmesan cheese
- 1 cup extra virgin olive oil
- 1/2 teaspoon salt
- 1/2 teaspoon sugar
- 2 squeezes lemon juice

- Collect all plant material in plastic garbage bags and dispose of with your household trash.
- Garlic Mustard should not be disposed of with your yard waste and **SHOULD NOT BE COMPOSTED.**

[Volunteer HERE to remove garlic mustard from some of your favorite Open Spaces in Lexington!](#)

Upcoming Events!!!



Kill Your Lawn:

with Dan Jaffe Wilder

May 11, 2022, 7pm

In Kill Your Lawn, Dan Jaffe Wilder will describe a range of ways you can care for your land, from managing lawn without harmful pesticides and fertilizers to replacing it with native plants.

[Register Here!](#)



Stewardship Saturday

volunteer work and camaraderie

Next Event: Pull Garlic Mustard @ Daisy Wilson Meadow

Saturday May 14th 9:00 am-
noon

Event Leader:

Mike Hurt

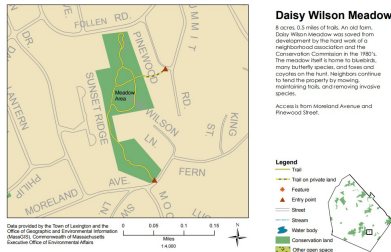
[Email us to register!](#)

Join the Conservation Stewards to pull invasive garlic mustard along the trail into the meadow from Moreland Avenue. Meet and park along Moreland Avenue at the trailhead.

We will provide all tools and know how just bring work gloves, appropriate clothing (e.g. long pants, no open toed shoes), and a willingness to work!

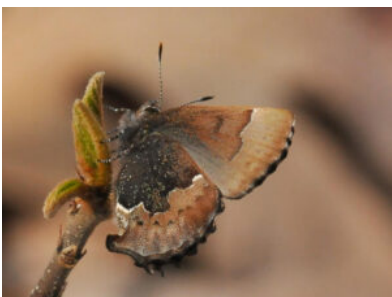
Lexington Conservation Lands

Town of Lexington Conservation Division • 1625 Massachusetts Avenue • Lexington, MA 02420 • 781.862.0500



Citizens for Lexington Conservation Walks

[Register and find out
more](#)



Butterfly Walk, Arlington's Great Meadows

SUNDAY MAY 1: 11 AM

Leader: Tom Whelan:

781-915-9988, tom@whelanphoto.com



Garlic Mustard Pull at Lincoln Park SUNDAY MAY 1: 2-4 PM

Leader: Keith Ohmart:

781-862-6216, kohmart@verizon.net



Birding Lower Vine Brook
SATURDAY MAY 7:
8-10 AM

Leader: Harry West:
617-461-9500, hwest2020@gmail.com



Birding Paint Mine
SUNDAY MAY 8: 7-9 AM

Leader: Dianna Queheillalt:
clclexington8@gmail.com



Mindful Walk and Sit,
Hayden Woods
SATURDAY MAY 14:
9-10:30 AM

Leader: Barbara Tarrh:
btarrh@gmail.com



Wild Edibles of
Lexington's Waysides
MONDAY MAY 16: 6-8 PM

Leader: Russ Cohen:
781-646-7489, eatwild@rcn.com



Peak Migration Birding
at Dunback Meadow
SATURDAY MAY 21: 7-9
AM

Leader: Bobbie Hodson :
781-861-9421,
robertahodson@comcast.net



Lexington Conservation
781-698-4532
[Email](#)
[Website](#)

Connect with us



Town of Lexington, MA | 1625 Massachusetts Avenue, Lexington, MA 02420

[Unsubscribe sdugan@lexingtonma.gov](mailto:sdugan@lexingtonma.gov)

[Update Profile](#) | [Constant Contact Data Notice](#)

Sent by landstewards@lexingtonma.gov in collaboration
with



Try email marketing for free today!