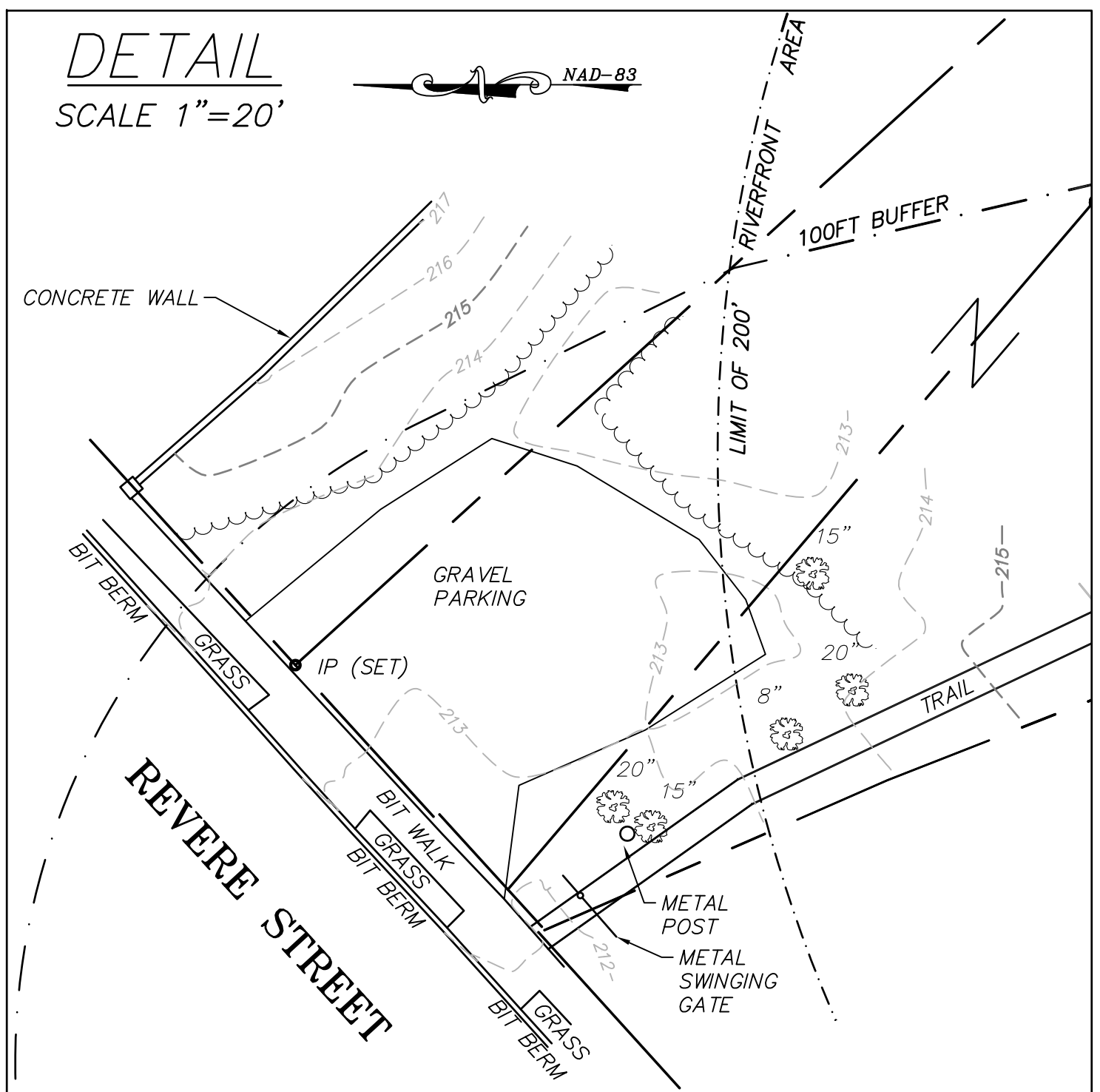


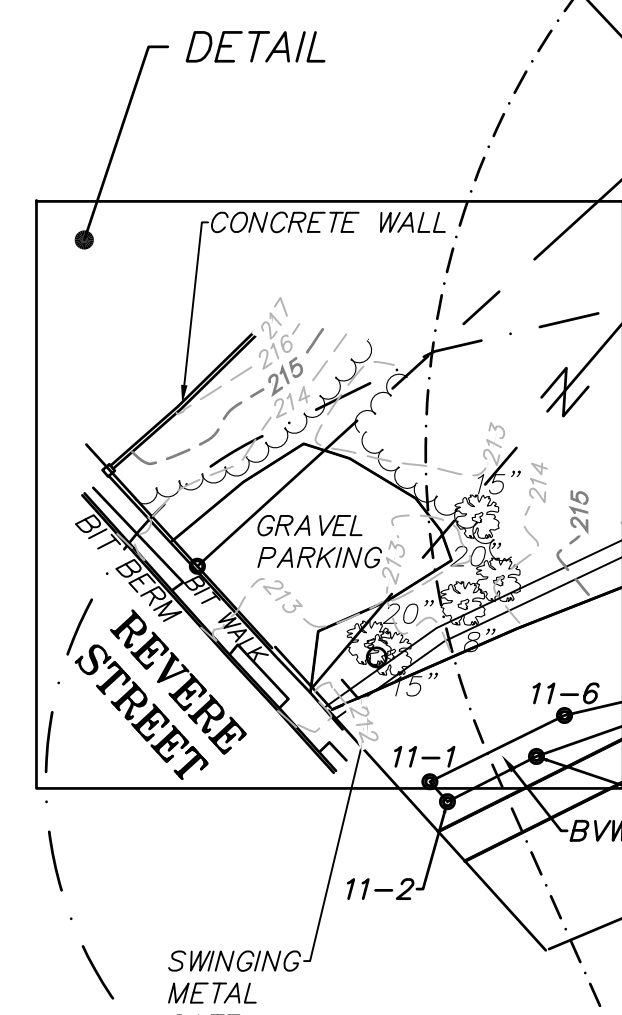
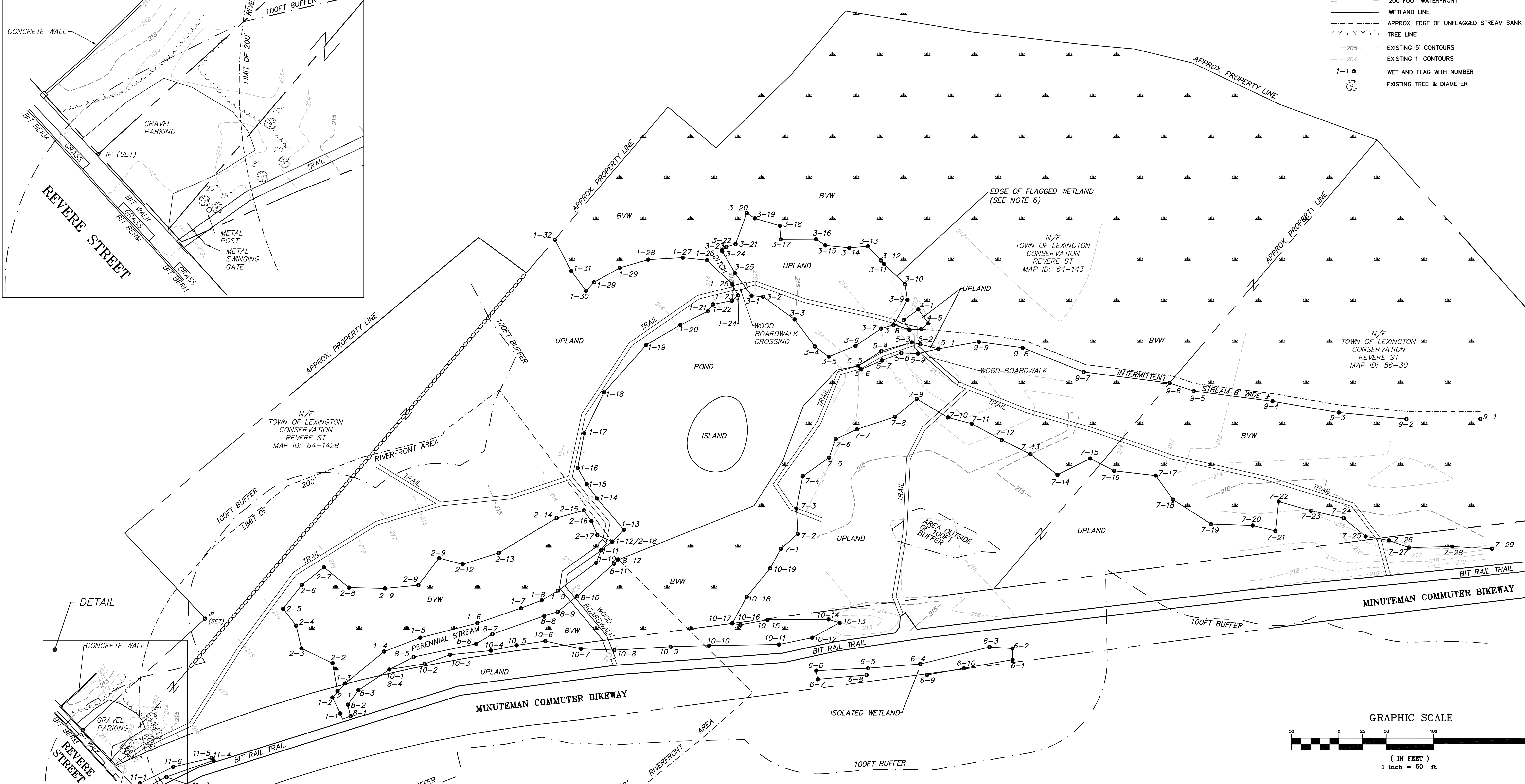
**DETAIL**

SCALE 1"=20'



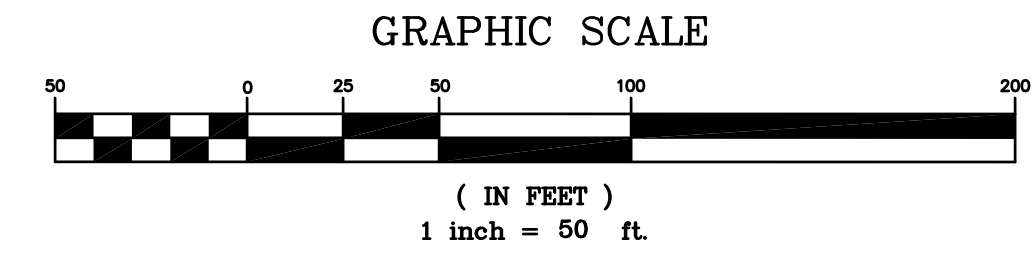
**LEGEND:**

- EOP — EDGE OF PAVEMENT
- - - 100 FOOT BUFFER
- - - 200 FOOT WATERFRONT
- WETLAND LINE
- - - APPROX. EDGE OF UNFLAGGED STREAM BANK
- ~ ~ ~ TREE LINE
- - - EXISTING 5' CONTOURS
- - - EXISTING 1' CONTOURS
- 1-1 ● WETLAND FLAG WITH NUMBER
- ⊙ EXISTING TREE & DIAMETER



**NOTES**

1. THIS PLAN IS BASED UPON AN ON-THE-GROUND GPS/INSTRUMENT SURVEY PERFORMED BY GCG ASSOCIATES, INC. FROM FEBRUARY 8, 2019 TO FEBRUARY 15, 2019 AND JUNE 4 AND 5, 2019.
2. THE COORDINATES, IN FEET, ARE BASED UPON THE STATE PLANE COORDINATE SYSTEM 1983 AS DEFINED BY MASSACHUSETTS GEODETIC SURVEY.
3. ELEVATIONS, IN FEET, REFER TO THE NORTH AMERICAN VERTICAL DATUM OF 1988 (NAVD 88) AS DEFINED BY MASSACHUSETTS GEODETIC SURVEY.
4. CONTOUR INTERVAL: 1 FOOT.
5. PROPERTY LINES ARE COMPILED USING MASS GIS DATA LAYERS AND ARE APPROXIMATE.
6. WETLAND FLAGGED BY WETLAND & LAND MANAGEMENT, INC. FEBRUARY 8 AND 15, 2019 AND LOCATED BY THIS SURVEY (SEE NOTE No. 1).



TOWN OF LEXINGTON, MASSACHUSETTS		
PARKER MEADOW EXISTING CONDITIONS PLAN		
GCG ASSOCIATES, INC.		
WILMINGTON	MASSACHUSETTS	
SCALE: 1"=50'	DATE: 07/08/2019	
JOB NO. \ FILE NAME: 1906-SUBMITTAL	DESIGNED BY: X.X.X. DRAWN BY: H.J.P. CHECKED BY: M.J.C.	PLAN NO. 1 of 1

