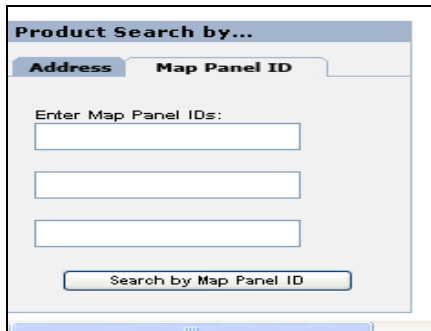



## MAKING A “FIRMETTE”

Homes within the 100- year flood zone are governed by wetland permitting requirements, so construction, landscaping, and grading projects may require a permit from the Conservation Commission. Now, anyone can view official FEMA Flood Insurance Rate Maps (FIRMs) on line, and create and print smaller “FIRMettes” as pdf files. The instructions below allow you to determine whether a particular property is within the 100-year flood zone.

A

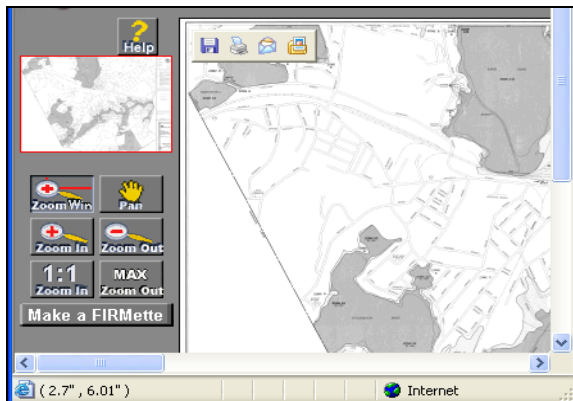


B

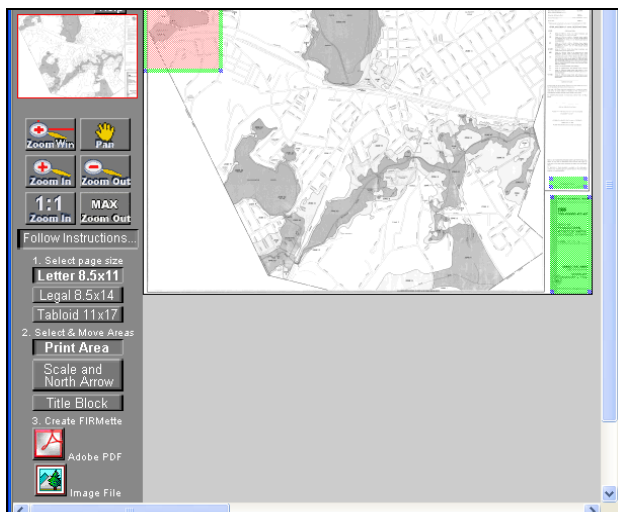


Map Item ID	Description	Effective Date	Show LOMC	View	Buy
2501930011B	FRAMINGHAM,TWN/MIDDLESEX CO	02/03/1982	+		

C



D



### A Do-It-Yourself Guide to Making a “FIRMette”:

1. Go to <http://msc.fema.gov>.
2. At the first screen “A”, on the left panel, under “Product Search By”, enter an address (or the FIRM map panel ID). Click “Search by Street Address”.
3. A new window will appear (“B”). Click the magnifying glass icon under “View”. It will say: “Your document is loading. Please be patient.” You now can see the full FIRM map panel (screen “C”).
4. To zoom in on one area/address and make a FIRMette, click the “Make a FIRMette” button on the left (screen “C”). It will say: “Retrieving data”. It may take a few moments.
5. In Screen “D”, on the left at Step 1, select your paper size.
6. In Screen “D”, on the left at Step 2, leave “Print Area” highlighted (the other elements are automatically placed), select the pan (hand) button, and drag the pink box to cover the area of the map you want in your FIRMette.
7. In screen “D”, on the left at Step 3 Create a FIRMette”, click Adobe PDF to create a printable, saveable PDF file.
8. In the new screen, click “Save” save the FIRMette to your computer. You can then open and print that file anytime.

If you have questions about a specific project as it relates to wetland permitting, please call the Conservation Commission office at

781-862-0500 x 226

[ConservationComm@lexingtonma.gov](mailto:ConservationComm@lexingtonma.gov)