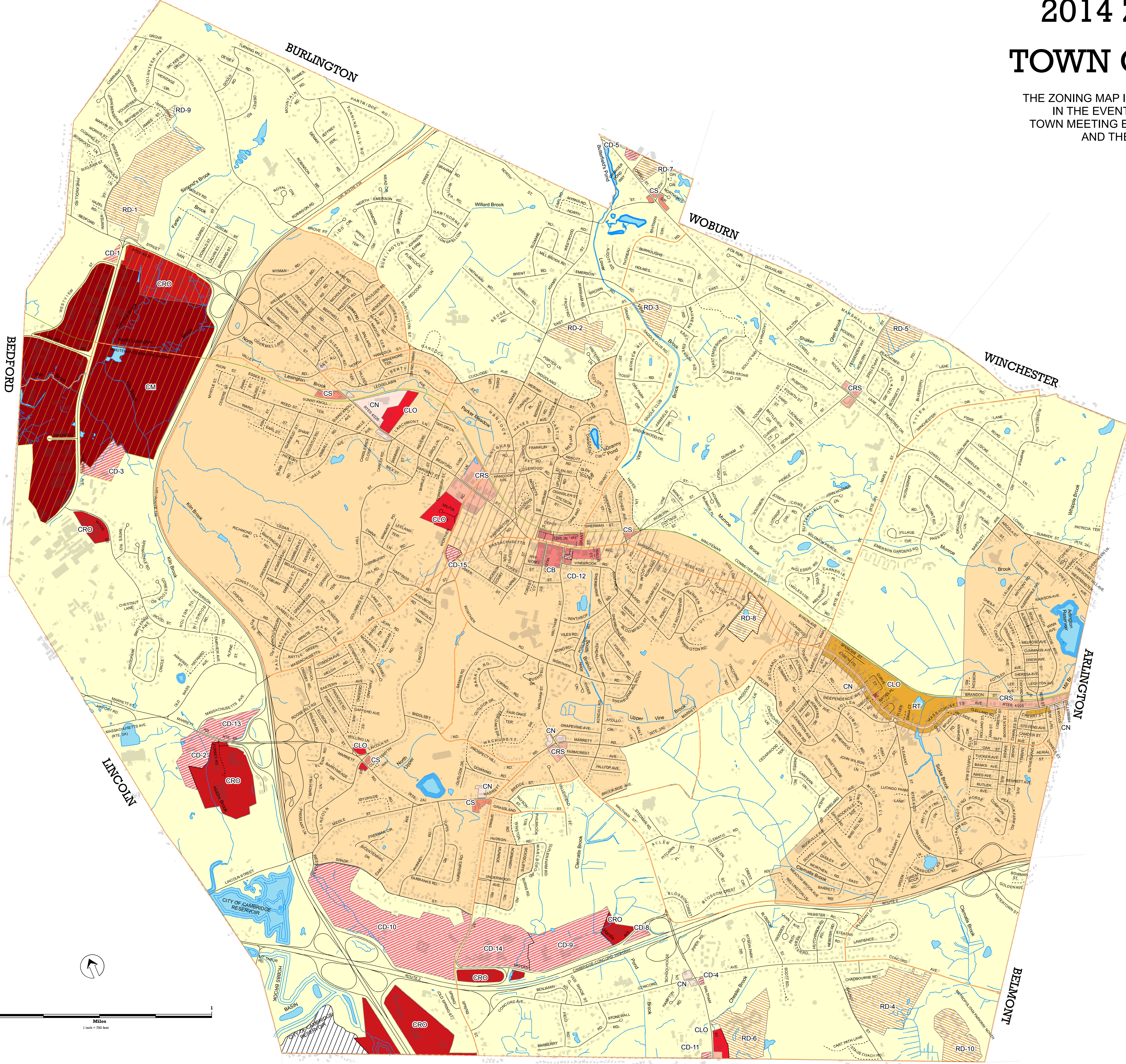


# 2014 ZONING MAP OF THE TOWN OF LEXINGTON

THE ZONING MAP IS FOR GENERAL INFORMATION PURPOSES. IN THE EVENT OF ANY DISCREPANCY, THE VOTE OF TOWN MEETING ESTABLISHING OR AMENDING BOUNDARIES AND THE TEXT OF THE BYLAW GOVERNS.



- Zoning Districts**
- Overlay Districts**
- Transportation Management Districts
- RESIDENTIAL DISTRICTS**
- RS - One Family Dwelling
  - RO - One Family Dwelling
  - RT - Two Family Dwelling
- COMMERCIAL / INDUSTRIAL DISTRICTS**
- CB - Central Business
  - CLO - Local Office
  - CM - Manufacturing
  - CN - Neighborhood Business
  - CRO - Regional Office
  - CRS - Retail Shopping
  - CS - Service Business
- PLANNED DEVELOPMENT DISTRICTS**
- CD - Planned Commercial
  - RD - Planned Residential
- No Zone\***
- Other Features**
- Precincts
  - Historic Districts
- Street Classification**
- State or Town Accepted Way
  - Unaccepted Way
  - Minuteman Commuter Bikeway

CERTAIN STREETS WHICH APPEAR ON THE 'STREET AND PRECINCT MAP' PREPARED BY THE ENGINEERING DEPARTMENT DO NOT APPEAR ON THE ZONING MAP BECAUSE THEY DO NOT CONFORM TO THE DEFINITION OF 'STREET, ROAD, OR WAY' IN THE ZONING BY-LAW.

Disclaimer: The display of the status of streets classification is not official, and may contain errors or omissions. While all reasonable efforts have been made to assure the accuracy of the information provided, do not rely on this information without first checking with the Planning Department.

\* BY A LAND COURT DECISION, THE RO CLASSIFICATION OF THIS LAND HAS BEEN DECLARED INVALID

Map Produced by  
The Lexington Planning Department  
March 2014