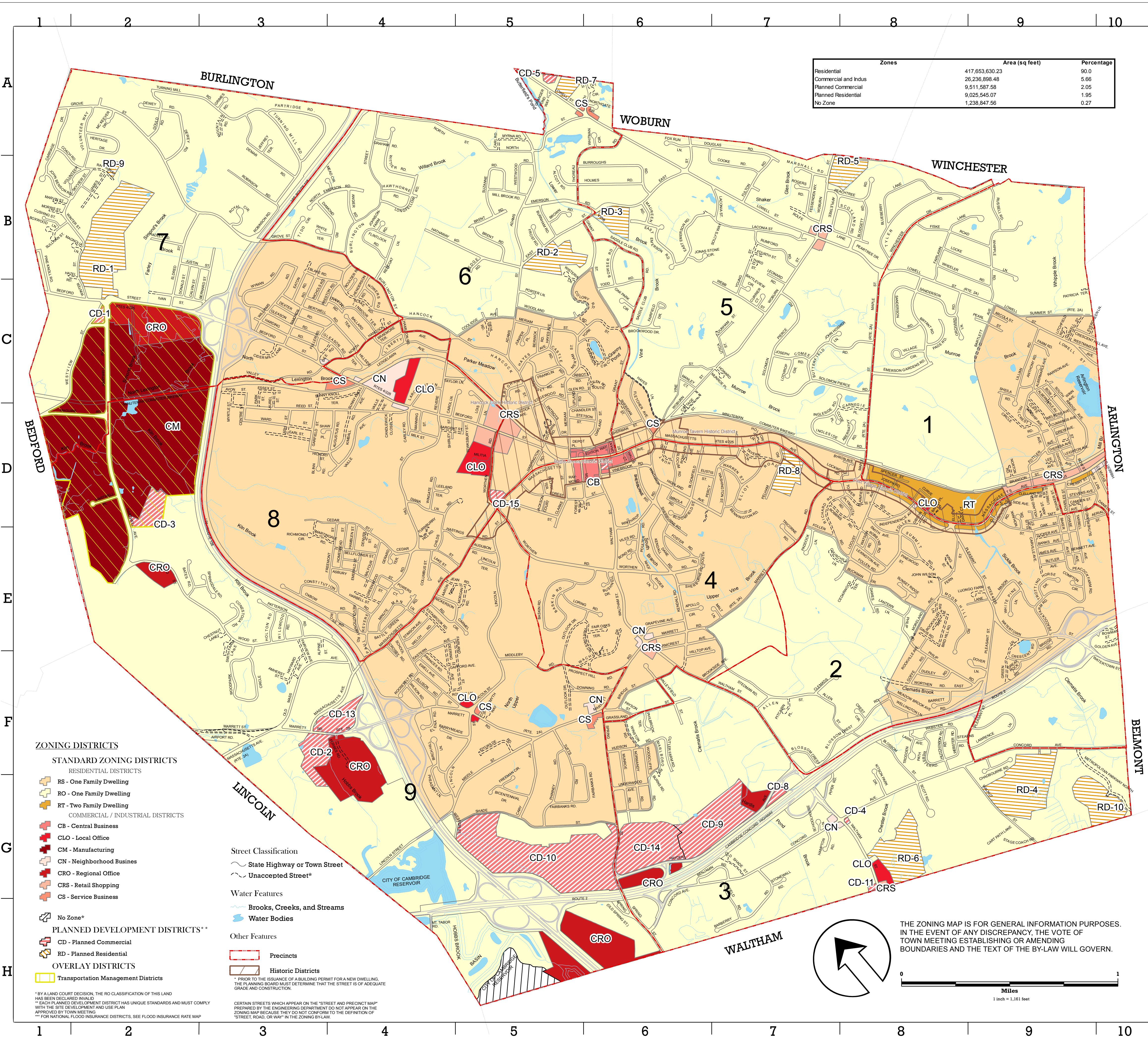


# 2013 ZONING MAP OF THE TOWN OF LEXINGTON

Zones	Area (sq feet)	Percentage
Residential	417,653,630.23	90.0
Commercial and Indus	26,236,898.48	5.66
Planned Commercial	9,511,587.58	2.05
Planned Residential	9,025,545.07	1.95
No Zone	1,238,847.56	0.27



- ZONING DISTRICTS**
- STANDARD ZONING DISTRICTS**
- RESIDENTIAL DISTRICTS**
- RS - One Family Dwelling
  - RO - One Family Dwelling
  - RT - Two Family Dwelling
- COMMERCIAL / INDUSTRIAL DISTRICTS**
- CB - Central Business
  - CLO - Local Office
  - CM - Manufacturing
  - CN - Neighborhood Business
  - CRO - Regional Office
  - CRS - Retail Shopping
  - CS - Service Business
- PLANNED DEVELOPMENT DISTRICTS\*\***
- CD - Planned Commercial
  - RD - Planned Residential
- OVERLAY DISTRICTS**
- Transportation Management Districts
- Street Classification**
- State Highway or Town Street
  - Other Street\*
- Water Features**
- Brooks, Creeks, and Streams
  - Water Bodies
- Other Features**
- Precincts
  - Historic Districts
- \* PRIOR TO THE ISSUANCE OF A BUILDING PERMIT FOR A NEW DWELLING, THE PLANNING BOARD MUST DETERMINE THAT THE STREET IS OF ADEQUATE GRADE AND CONSTRUCTION.
- \*\* EACH PLANNED DEVELOPMENT DISTRICT HAS UNIQUE STANDARDS AND MUST COMPLY WITH THE SITE DEVELOPMENT AND USE PLAN APPROVED BY TOWN MEETING.
- \*\*\* FOR NATIONAL FLOOD INSURANCE DISTRICTS, SEE FLOOD INSURANCE RATE MAP.
- CERTAIN STREETS WHICH APPEAR ON THE "STREET AND PRECINCT MAP" WITH THE SITE DEVELOPMENT AND USE PLAN APPROVED BY TOWN MEETING, MAY NOT CONFORM TO THE DEFINITION OF "STREET, ROAD, OR WAY" IN THE ZONING BY-LAW.

THE ZONING MAP IS FOR GENERAL INFORMATION PURPOSES. IN THE EVENT OF ANY DISCREPANCY, THE VOTE OF TOWN MEETING ESTABLISHING OR AMENDING BOUNDARIES AND THE TEXT OF THE BY-LAW WILL GOVERN.

0 1 Miles  
1 inch = 1,181 feet

- A-**
- ADAMS ST. from North St. to Willow St.
  - ADAMS ST. from Willow St. to North St.
  - ADAMS ST. from North St. to Willow St.
  - ADAMS ST. from Willow St. to North St.
  - ADAMS ST. from North St. to Willow St.
  - ADAMS ST. from Willow St. to North St.
  - ADAMS ST. from North St. to Willow St.
  - ADAMS ST. from Willow St. to North St.
  - ADAMS ST. from North St. to Willow St.
  - ADAMS ST. from Willow St. to North St.
- B-**
- ADAMS ST. from North St. to Willow St.
  - ADAMS ST. from Willow St. to North St.
  - ADAMS ST. from North St. to Willow St.
  - ADAMS ST. from Willow St. to North St.
  - ADAMS ST. from North St. to Willow St.
  - ADAMS ST. from Willow St. to North St.
  - ADAMS ST. from North St. to Willow St.
  - ADAMS ST. from Willow St. to North St.
  - ADAMS ST. from North St. to Willow St.
  - ADAMS ST. from Willow St. to North St.
- C-**
- ADAMS ST. from North St. to Willow St.
  - ADAMS ST. from Willow St. to North St.
  - ADAMS ST. from North St. to Willow St.
  - ADAMS ST. from Willow St. to North St.
  - ADAMS ST. from North St. to Willow St.
  - ADAMS ST. from Willow St. to North St.
  - ADAMS ST. from North St. to Willow St.
  - ADAMS ST. from Willow St. to North St.
  - ADAMS ST. from North St. to Willow St.
  - ADAMS ST. from Willow St. to North St.
- D-**
- ADAMS ST. from North St. to Willow St.
  - ADAMS ST. from Willow St. to North St.
  - ADAMS ST. from North St. to Willow St.
  - ADAMS ST. from Willow St. to North St.
  - ADAMS ST. from North St. to Willow St.
  - ADAMS ST. from Willow St. to North St.
  - ADAMS ST. from North St. to Willow St.
  - ADAMS ST. from Willow St. to North St.
  - ADAMS ST. from North St. to Willow St.
  - ADAMS ST. from Willow St. to North St.
- E-**
- ADAMS ST. from North St. to Willow St.
  - ADAMS ST. from Willow St. to North St.
  - ADAMS ST. from North St. to Willow St.
  - ADAMS ST. from Willow St. to North St.
  - ADAMS ST. from North St. to Willow St.
  - ADAMS ST. from Willow St. to North St.
  - ADAMS ST. from North St. to Willow St.
  - ADAMS ST. from Willow St. to North St.
  - ADAMS ST. from North St. to Willow St.
  - ADAMS ST. from Willow St. to North St.
- F-**
- ADAMS ST. from North St. to Willow St.
  - ADAMS ST. from Willow St. to North St.
  - ADAMS ST. from North St. to Willow St.
  - ADAMS ST. from Willow St. to North St.
  - ADAMS ST. from North St. to Willow St.
  - ADAMS ST. from Willow St. to North St.
  - ADAMS ST. from North St. to Willow St.
  - ADAMS ST. from Willow St. to North St.
  - ADAMS ST. from North St. to Willow St.
  - ADAMS ST. from Willow St. to North St.
- G-**
- ADAMS ST. from North St. to Willow St.
  - ADAMS ST. from Willow St. to North St.
  - ADAMS ST. from North St. to Willow St.
  - ADAMS ST. from Willow St. to North St.
  - ADAMS ST. from North St. to Willow St.
  - ADAMS ST. from Willow St. to North St.
  - ADAMS ST. from North St. to Willow St.
  - ADAMS ST. from Willow St. to North St.
  - ADAMS ST. from North St. to Willow St.
  - ADAMS ST. from Willow St. to North St.
- H-**
- ADAMS ST. from North St. to Willow St.
  - ADAMS ST. from Willow St. to North St.
  - ADAMS ST. from North St. to Willow St.
  - ADAMS ST. from Willow St. to North St.
  - ADAMS ST. from North St. to Willow St.
  - ADAMS ST. from Willow St. to North St.
  - ADAMS ST. from North St. to Willow St.
  - ADAMS ST. from Willow St. to North St.
  - ADAMS ST. from North St. to Willow St.
  - ADAMS ST. from Willow St. to North St.

Map Produced by  
The Lexington Planning Department  
July 2013