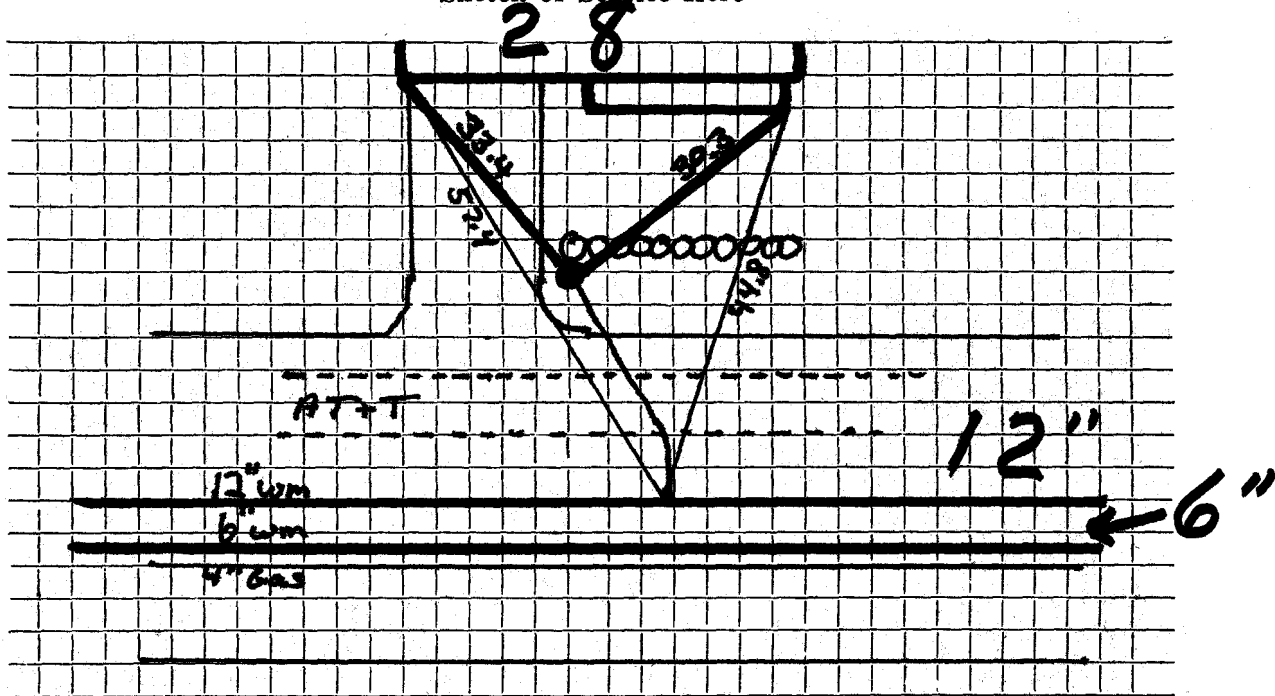


DATE 9-8-93

TOWN OF LEXINGTON — BOARD OF PUBLIC WORKS

WATER DIVISION

Sketch of Service Here



Connection made in Street. Work completed 8-24-93

Remarks: Depth @ Curb 3'-10" Insulated @ Main 5'-8"

1' under A.T. & T.

8'3" From Curb to Edge of A.T. @ T. 2'8" Between 6" + 10" W.M.