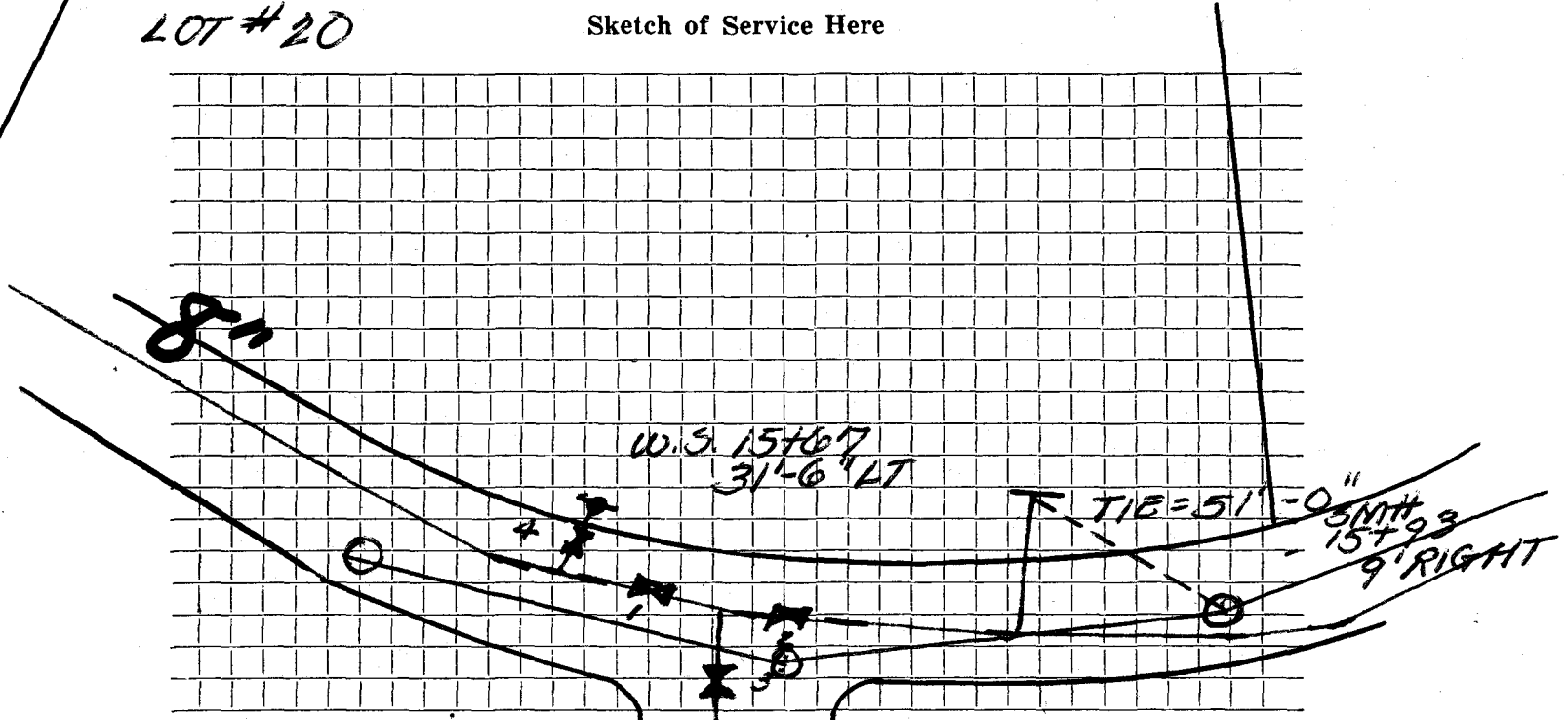


TOWN OF LEXINGTON — BOARD OF PUBLIC WORKS

WATER DIVISION

LOT # 20

Sketch of Service Here



Connection made in SOLOMON PIERCE Street.

Work completed

- Remarks: G.V. #1 14+30 8' LEFT
- G.V. #2 14+50 7' LEFT
- G.V. #3 14+44 2' RIGHT

- G.V. #4 14+24 11' LEFT
- HYDRANT 14+24 22' LEFT