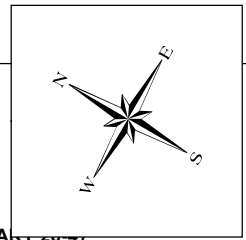


Water Service Tie Card  
**TOWN OF LEXINGTON**

107 Shade St

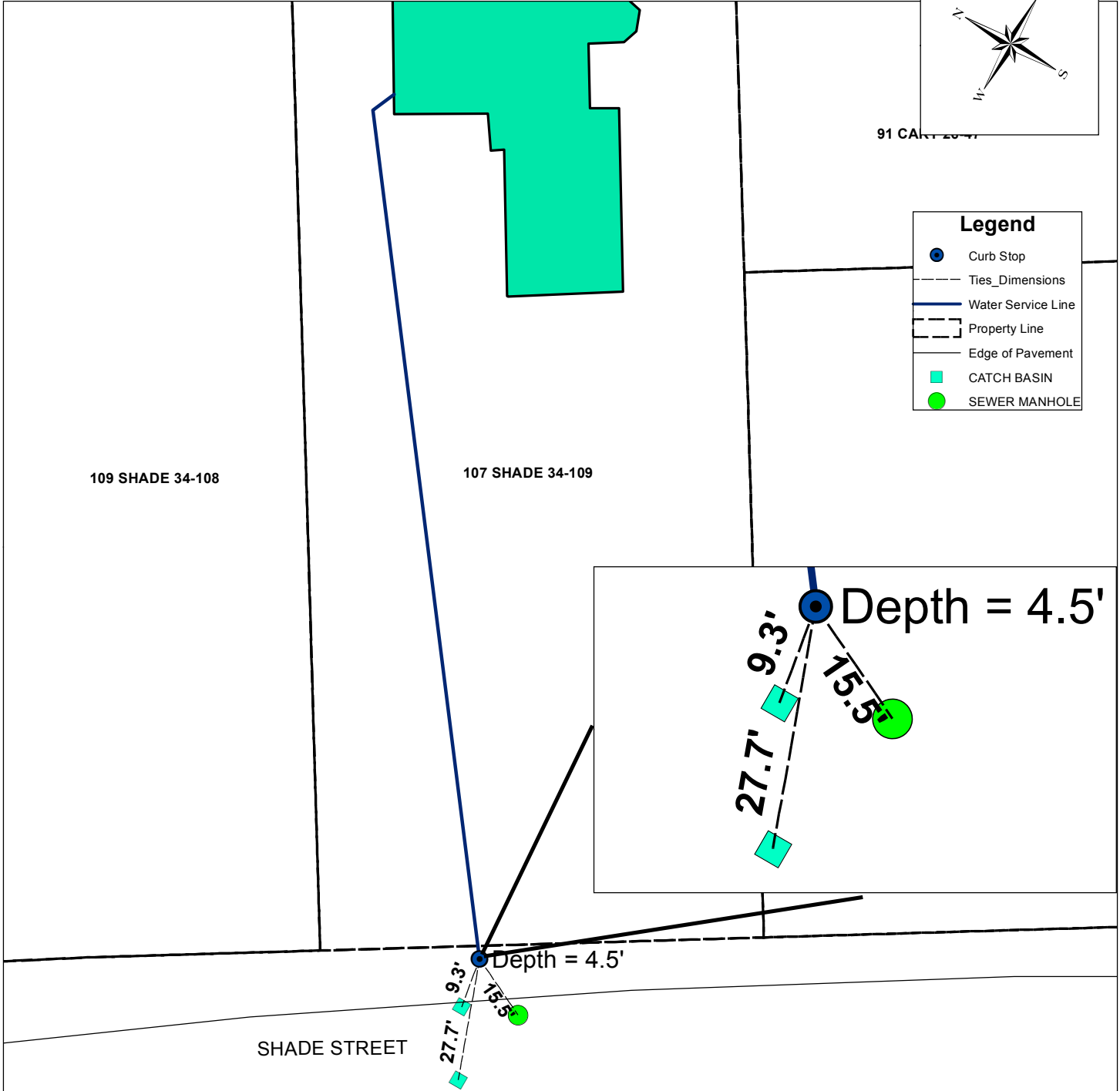
MASSACHUSETTS



91 CA...

**Legend**

- Curb Stop
- - - Ties\_Dimensions
- Water Service Line
- - - Property Line
- - - Edge of Pavement
- CATCH BASIN
- SEWER MANHOLE



| Address                | Map and Lot                   | Permit Number  | Contractor Name           | Inspector           |
|------------------------|-------------------------------|----------------|---------------------------|---------------------|
| 107 Shade St           | 34-109                        | 5789           | McLaughlin, James M. Inc. | dpavlik<br>msprague |
| Date                   | Material                      | Depth of Cover | Amount                    |                     |
| 4/25/2014              | 3/4" Copper type "k"          | 4.5 ft         | 6"                        |                     |
|                        | 3/4" to 1" fitting            | 4.5 ft         | 1                         |                     |
|                        | 1" Copper type "k"            | 4.5 ft         | 1                         |                     |
|                        | 1" Curb Valve and Buffalo Box | 8.0 ft         | 4 feet to union           |                     |
|                        | 1" Copper type "k"            | 5.0 ft         | 102 feet to union         |                     |
|                        | 1" Copper type "k"            | 5.0 ft         | 91 feet to HSE            |                     |
| Type of work completed |                               |                |                           |                     |

New 1" water service to house from curb stop. New house on lot old house removed.