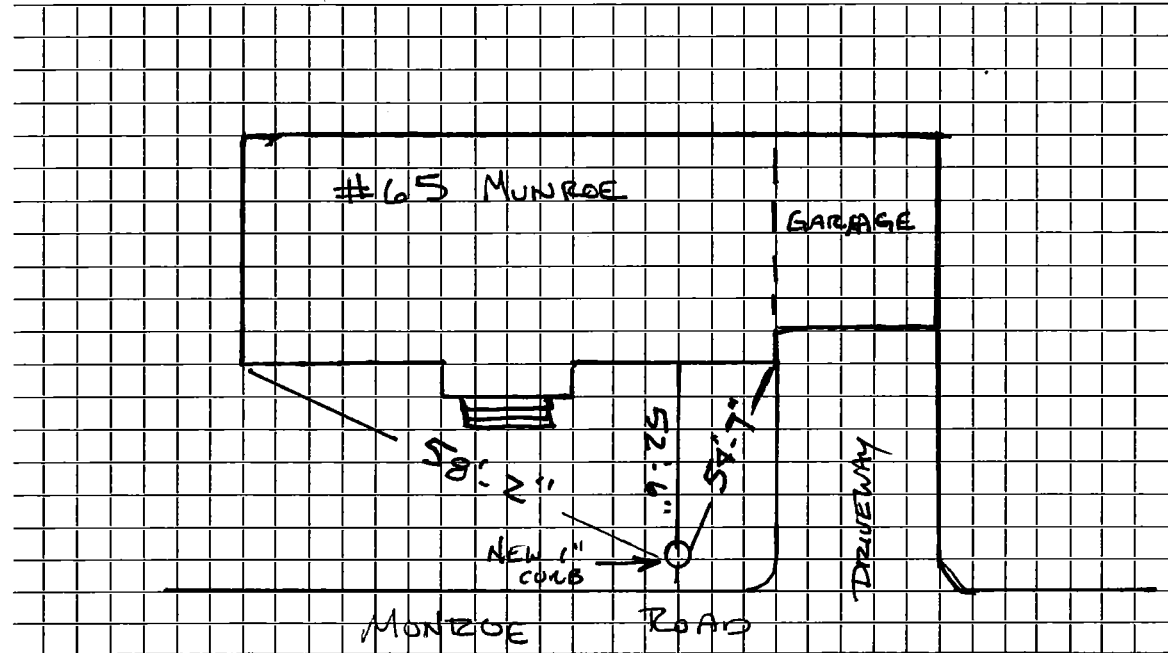




DATE 8-1-2012

TOWN OF LEXINGTON — BOARD OF PUBLIC WORKS  
WATER DIVISION

Sketch of Service Here



Connection made in..... Street. Work completed .....

Remarks:..... TOTAL LENGTH of NEW COPPER = 52'-6"

..... DEPTH AT HOUSE = 4'-6" NEW 1" CUMS STOP

..... DEPTH AT CURB = 5'-0" INSTALLED: 8.1.12