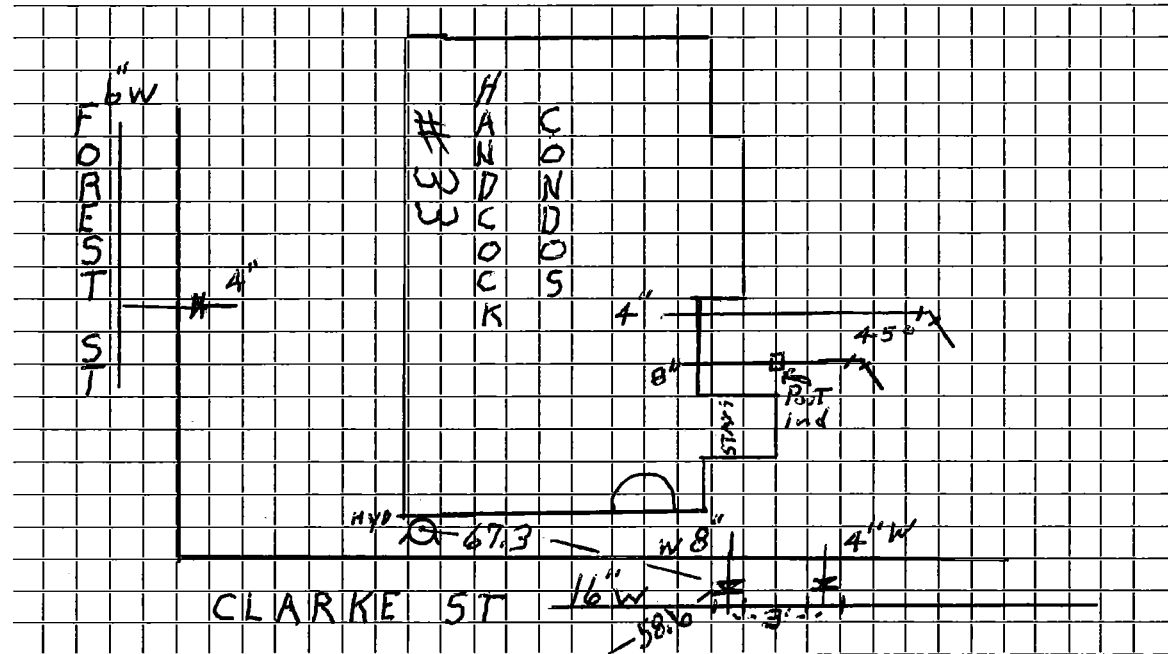




TOWN OF LEXINGTON — BOARD OF PUBLIC WORKS  
**WATER DIVISION**

Sketch of Service Here



Connection made in CLARKE Street. Work completed 2011

Remarks: 16x8-T.S.G. / 16x4-T.S.G. / old 4" Forest St. all in use - 5-2011

Post. Ind. Gate @ Build.

RAYMOND ST