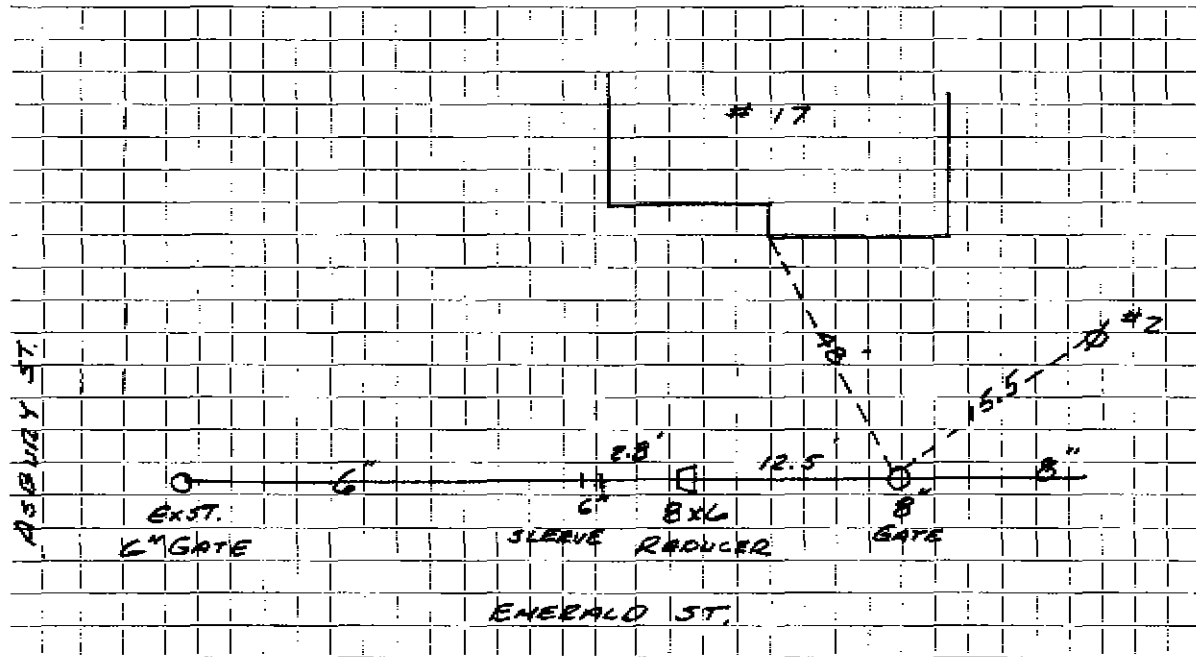




# TOWN OF LEXINGTON — BOARD OF PUBLIC WORKS

## WATER DIVISION

Sketch of Service Here



Connection made in EMERALD Street. Work completed .....

Remarks: TIE NEW 8" D.I. INTO EXISTING 6" C.I. .....

157' BETWEEN 6" GATE & 8" GATE .....

J.T. & C - CONTRACTOR .....