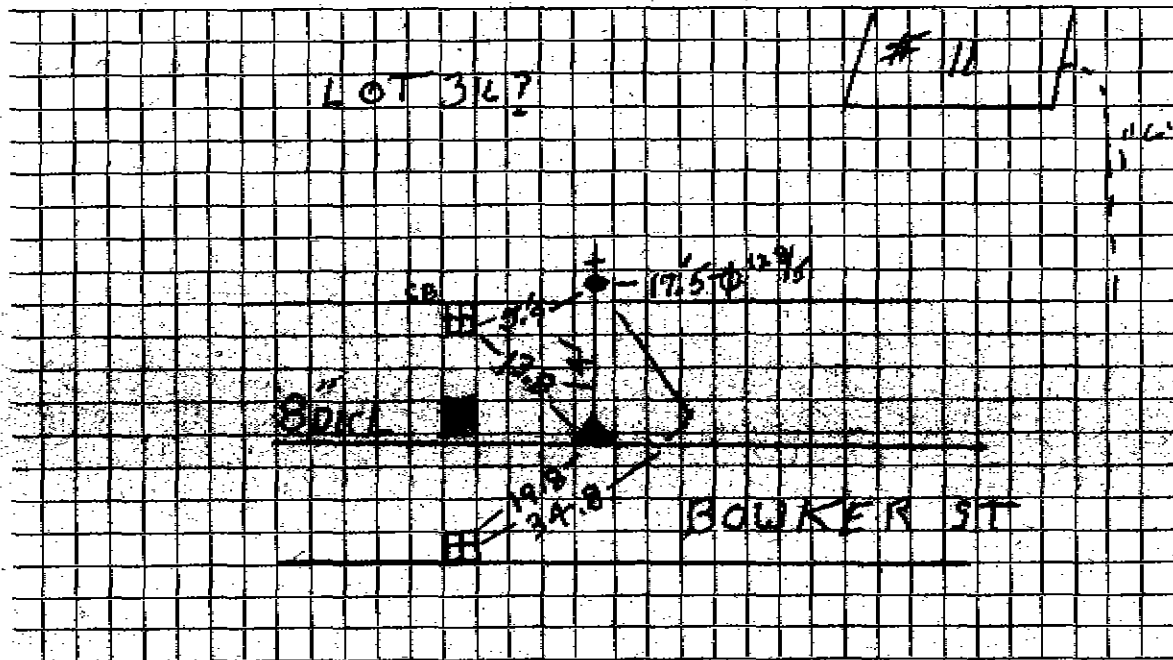


DATE _____

TOWN OF LEXINGTON — BOARD OF PUBLIC WORKS

WATER DIVISION

Sketch of Service Here



Connection made in Street. Work completed 9/3/09 P.A.O

Remarks: New 1" P.C. connected to existing 3/4" that was on lot.
Sewer is up hill from water 2.5" old tie