



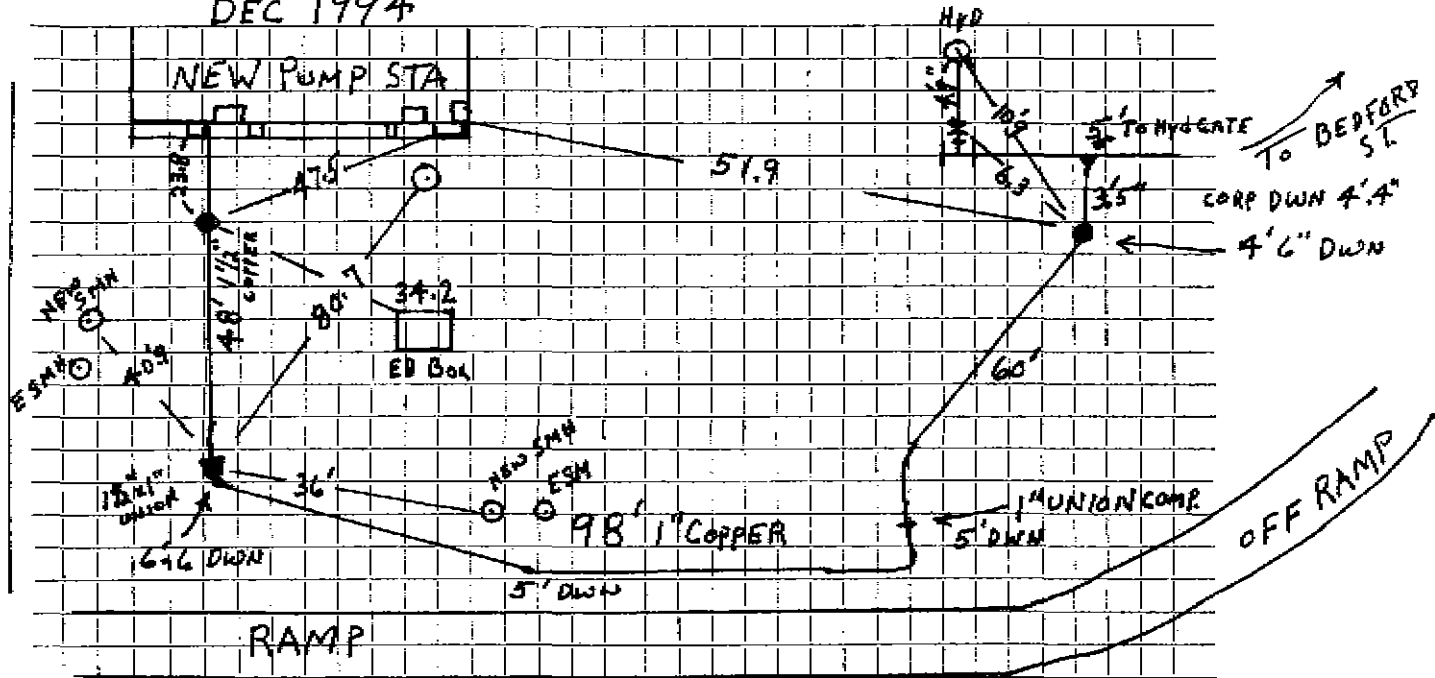
TOWN OF LEXINGTON — BOARD OF PUBLIC WORKS

WATER DIVISION

Sketch of Service Here

DEC 1994

RT 128



Connection made in \_\_\_\_\_ Street. Work completed \_\_\_\_\_

Remarks: 1 1/2" UNION IS ON TOP OFF 6" WATER MAIN BY ABANDONING 1 1/4 CORP.