

DATE _____

TOWN OF LEXINGTON — BOARD OF PUBLIC WORKS

WATER DIVISION

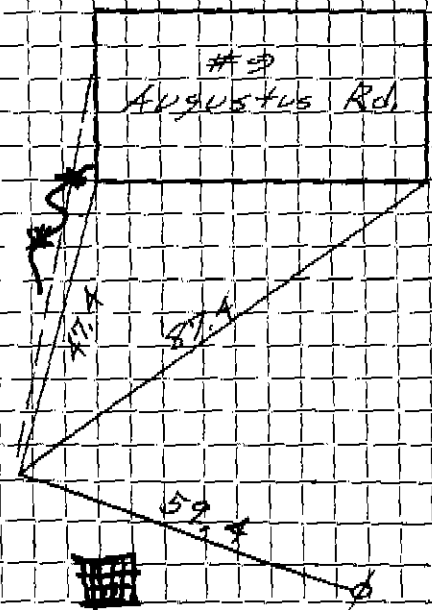
Sketch of Service Here

SERVICE Broken 7-23-04 when Foundation was Dug for Addition

1) UNION 3' of COPPER HOUSE
and 44' of CATCH BASIN

and UNION 10' of COPPER HOUSE
and 51 1/2" of CATCH BASIN

and 2 3/4 UNION
12' of 3/4 COPPER



Connection made in Street. Work completed

Remarks:

.....

.....