

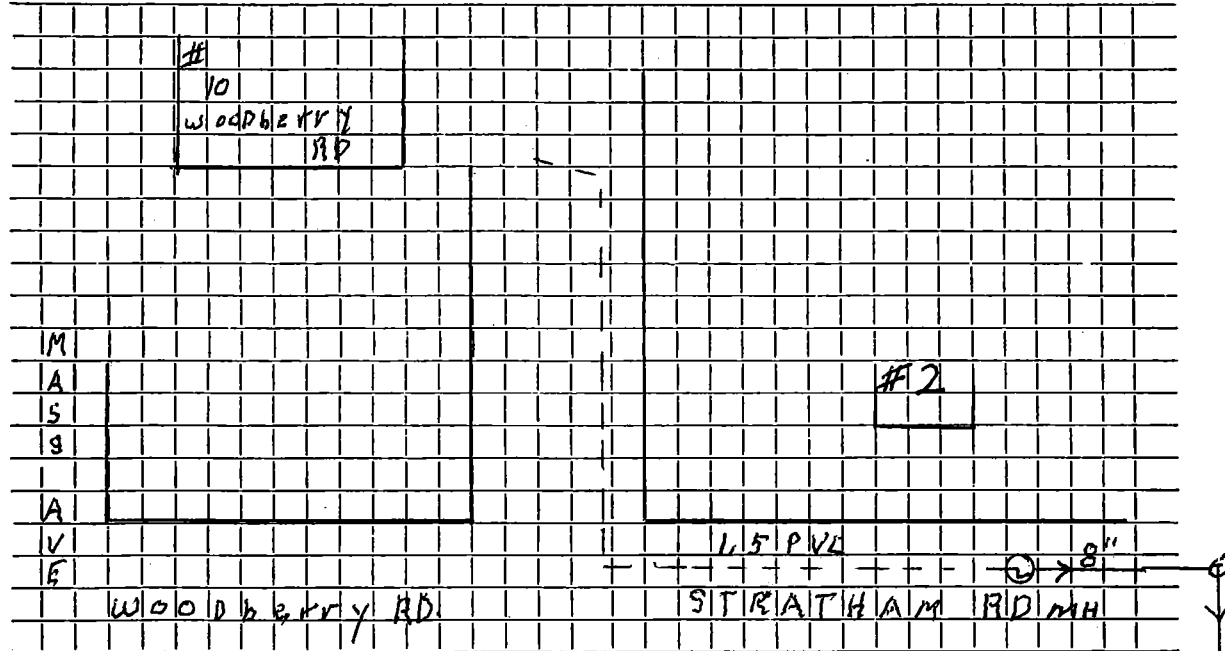


DATE \_\_\_\_\_

TOWN OF LEXINGTON — BOARD OF PUBLIC WORKS

SEWER DIVISION

Sketch of Service Here



Connection made in ..... Street. Work completed .....

Remarks: 1.5" P.V.C. Force M. in. Gas. INTO SMH. by No. 2. STRATHAM.....

.....  
.....