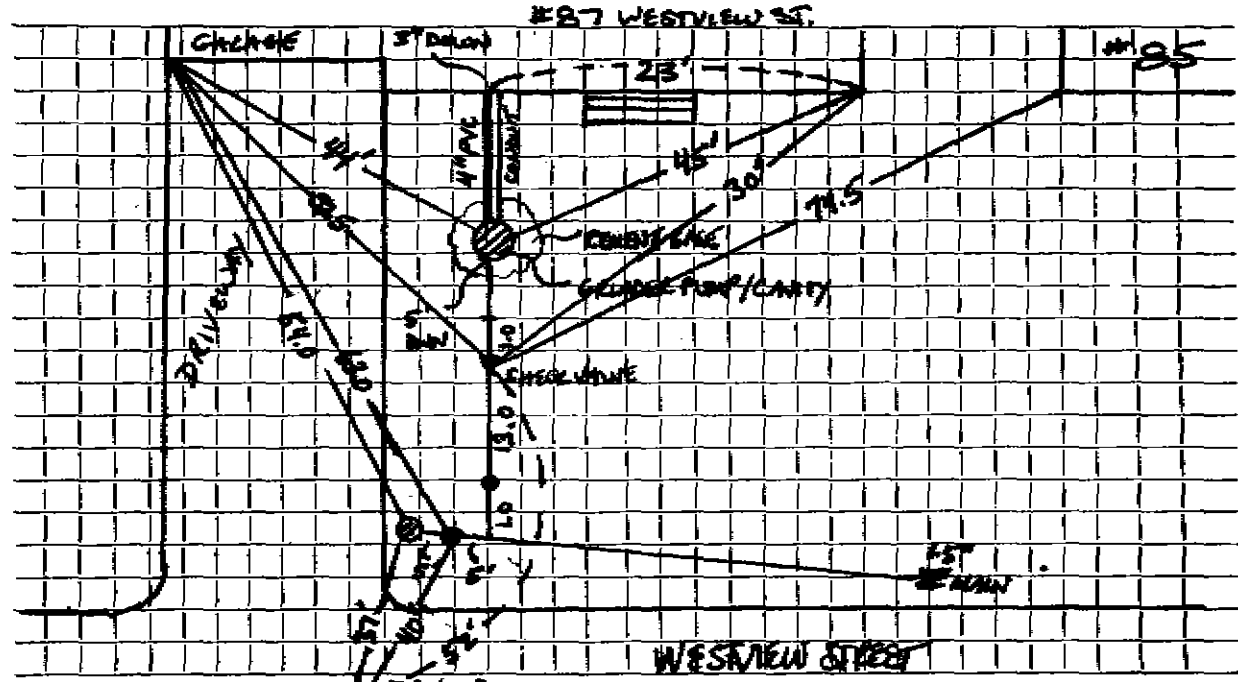




DATE 1-28-2002

TOWN OF LEXINGTON — BOARD OF PUBLIC WORKS  
SEWER DIVISION

Sketch of Service Here



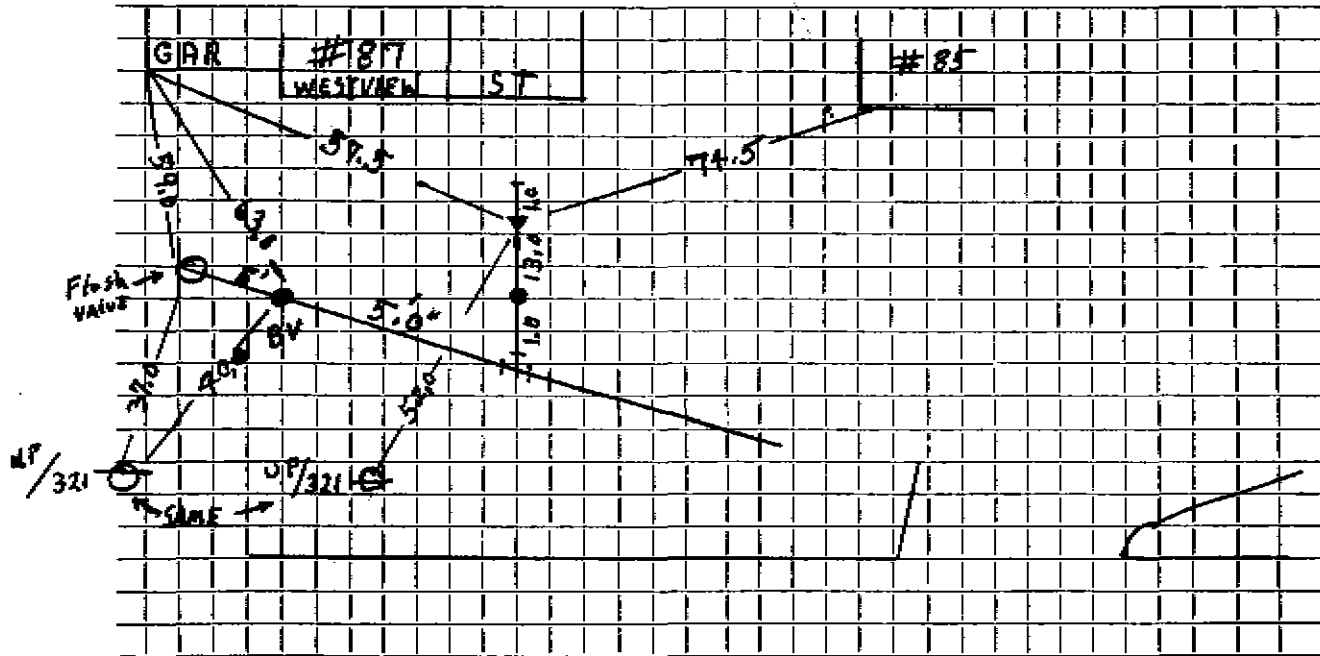
Connection made in ROW of WESTVIEW ST. Street. Work completed

- Remarks: FROM BALL VALVE TO FURR VALVE, 5' L.F., PLUS 2' L.F. UP 45° — PLUS 3' VERT FT FOR FLUSHING
- GROUNDWATER ~ 5' DOWN FROM GRADE; CONCRETE USED TO ANCHOR BASE.
  - ELECTRIC CONDUIT EXITS N.E. DIRECTLY ABOVE SEWER SERVICE W/ ~ 18° SEPARATION



TOWN OF LEXINGTON — BOARD OF PUBLIC WORKS  
SEWER DIVISION

Sketch of Service Here



Connection made in WESTVIEW ST Street. Work completed .....

Remarks: FROM BALL VALVE TO FLASH VALVE 5 LF. Plus 2 LF UP 45° - Plus 3 VERT FT. For Flushing .....