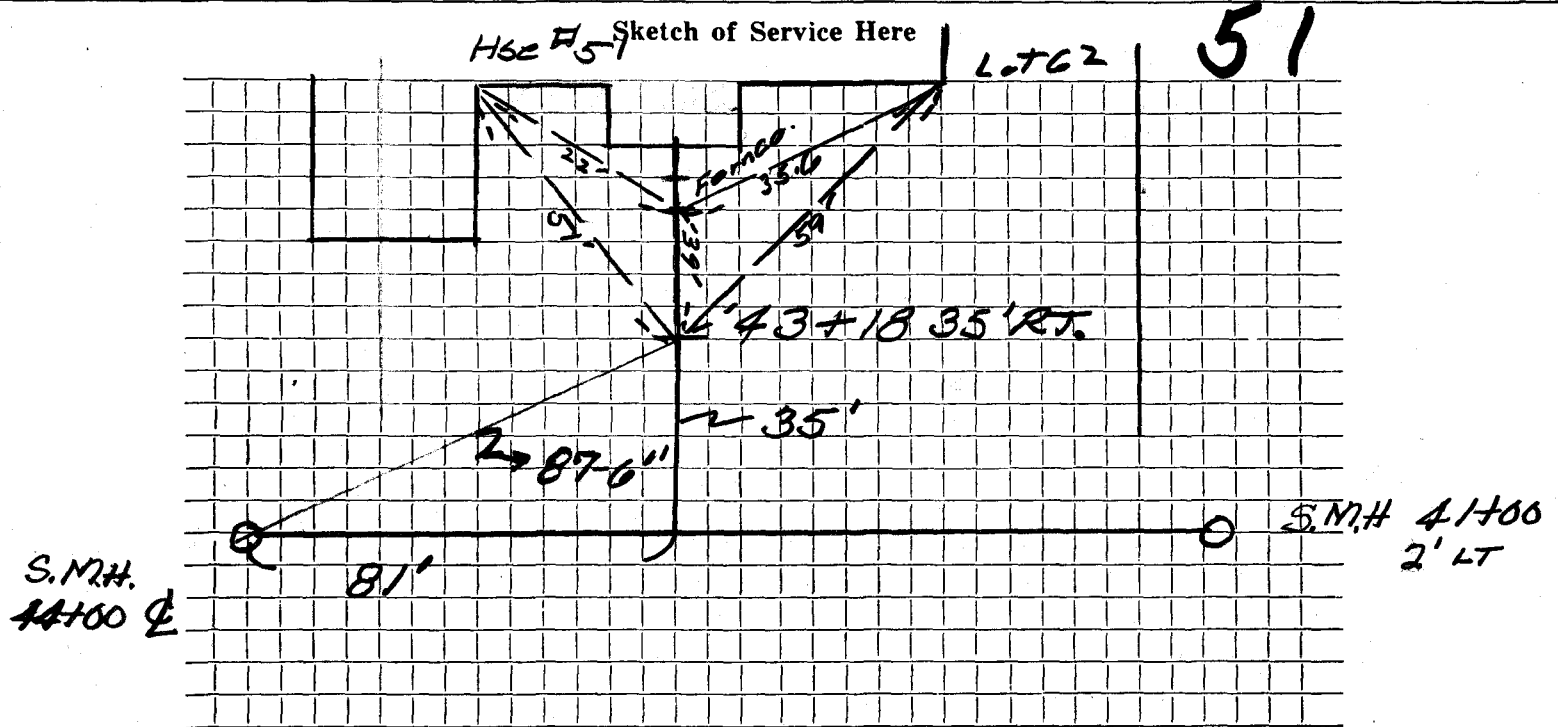


DATE _____

TOWN OF LEXINGTON — BOARD OF PUBLIC WORKS

SEWER DIVISION



Connection made in SOLONON PIEPER Street. Work completed

Remarks: 8" X 8" X 6" T
DEPTH 2'-6" @ TIME OF CONSTRUCTION
WILL BE BACK FILLED