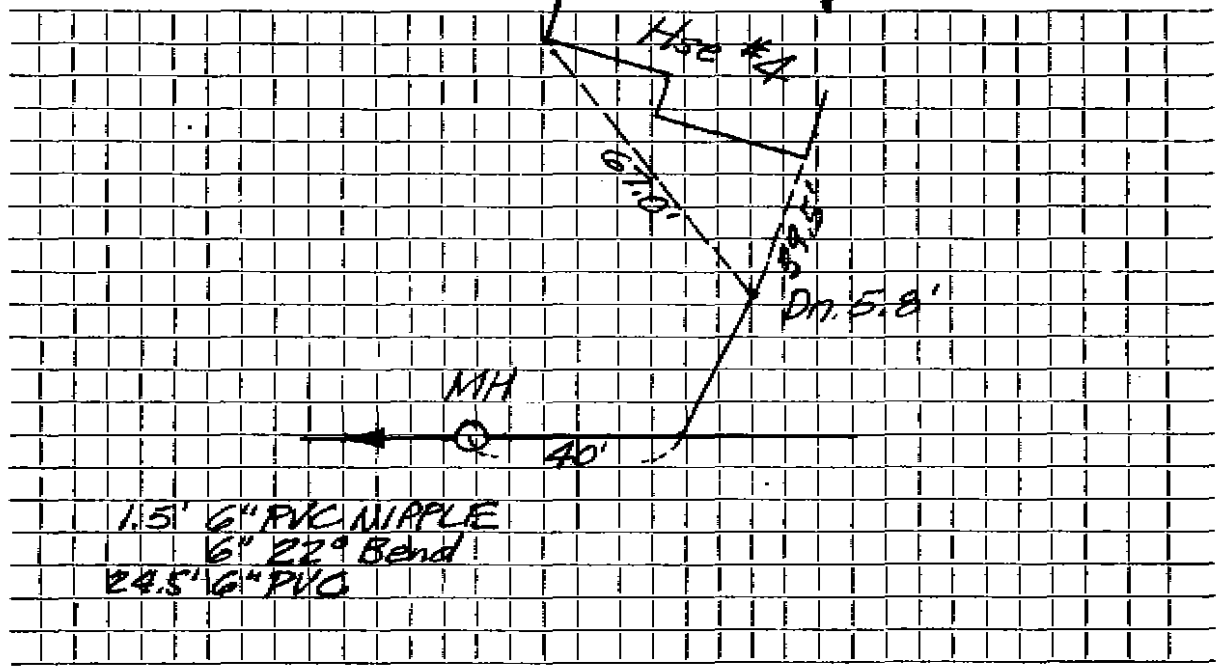


DATE 4-15-83

TOWN OF LEXINGTON — BOARD OF PUBLIC WORKS
SEWER DIVISION

Sketch of Service Here **4**



1.5' 6" PVC NIPPLE
6" 22° Bend
24.5' 6" PVC

Connection made in PITCAIRN PLACE Street. Work completed

Remarks:
.....
.....