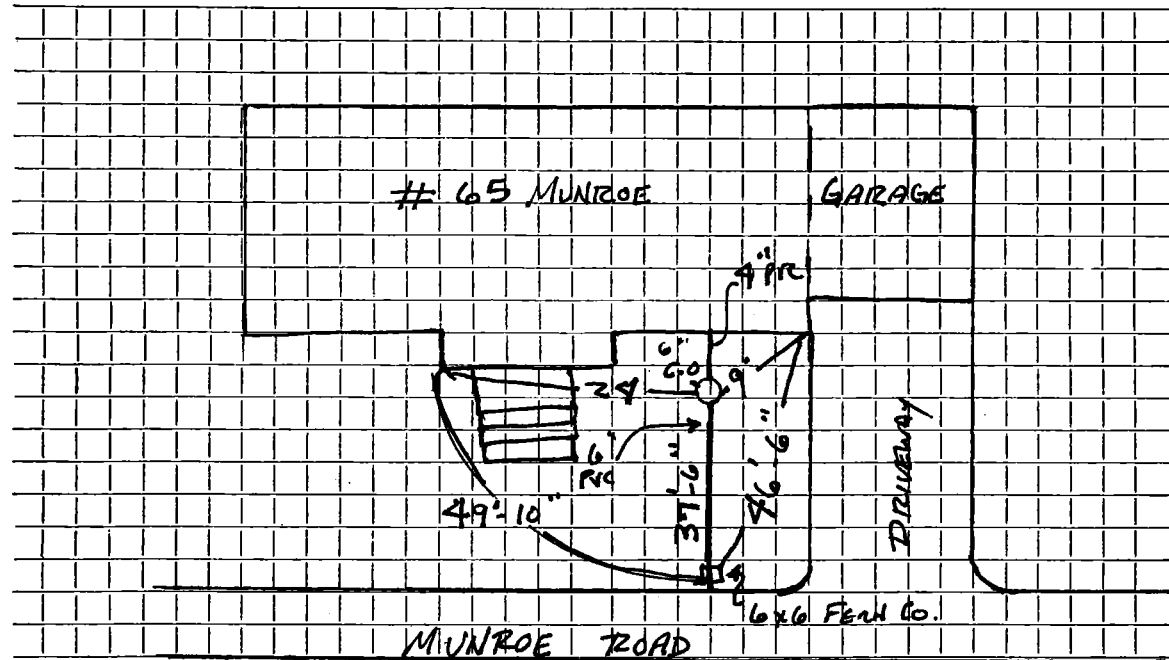


DATE 7-31-12

TOWN OF LEXINGTON — BOARD OF PUBLIC WORKS
SEWER DIVISION

Sketch of Service Here



Connection made in Street. Work completed

Remarks:

9'-4" PVC
37'-6" - 6" PVC

DEPTH AT 6" PVC TO AC = 4'-6"
DEPTH AT 6" CLEAN OUT = 4'-0"