

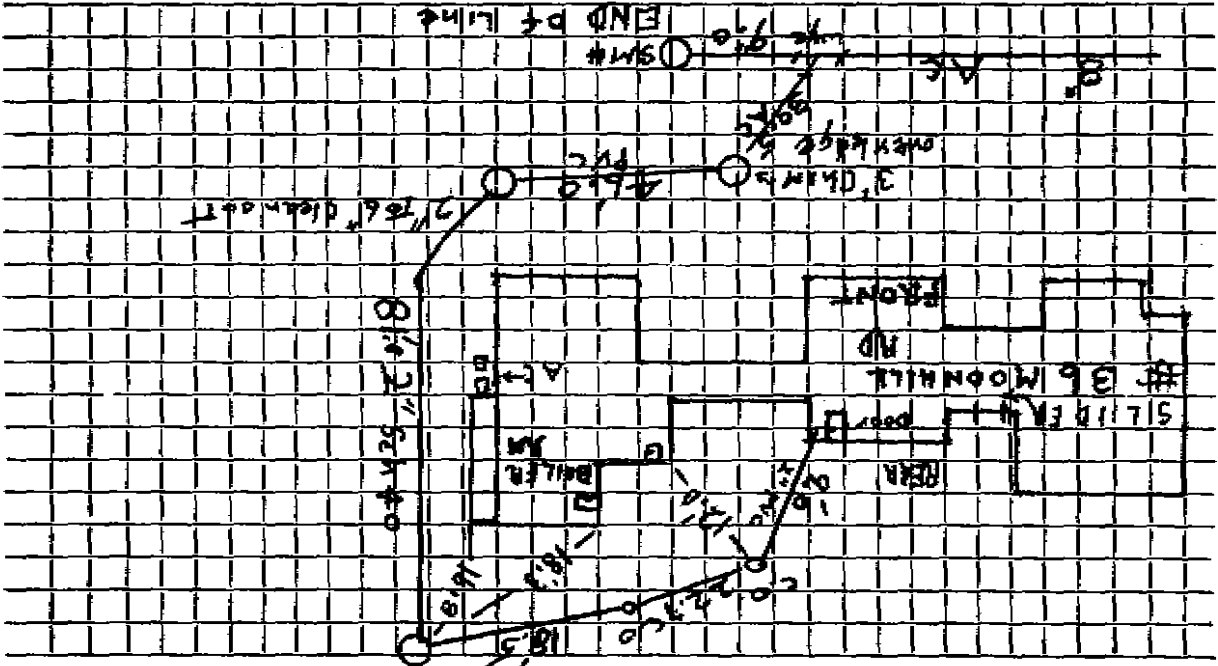


TOWN OF LEXINGTON — BOARD OF PUBLIC WORKS

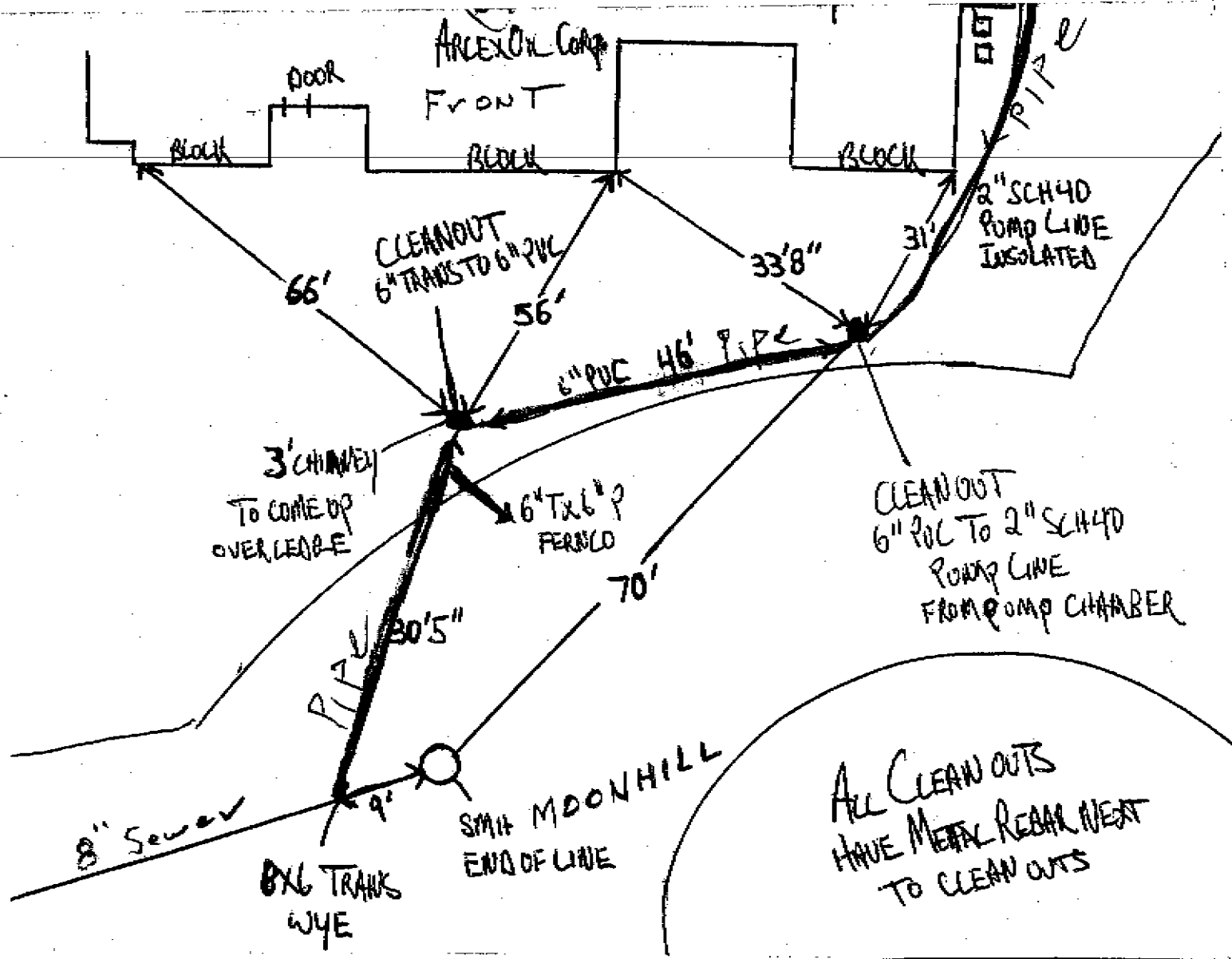
SEWER DIVISION

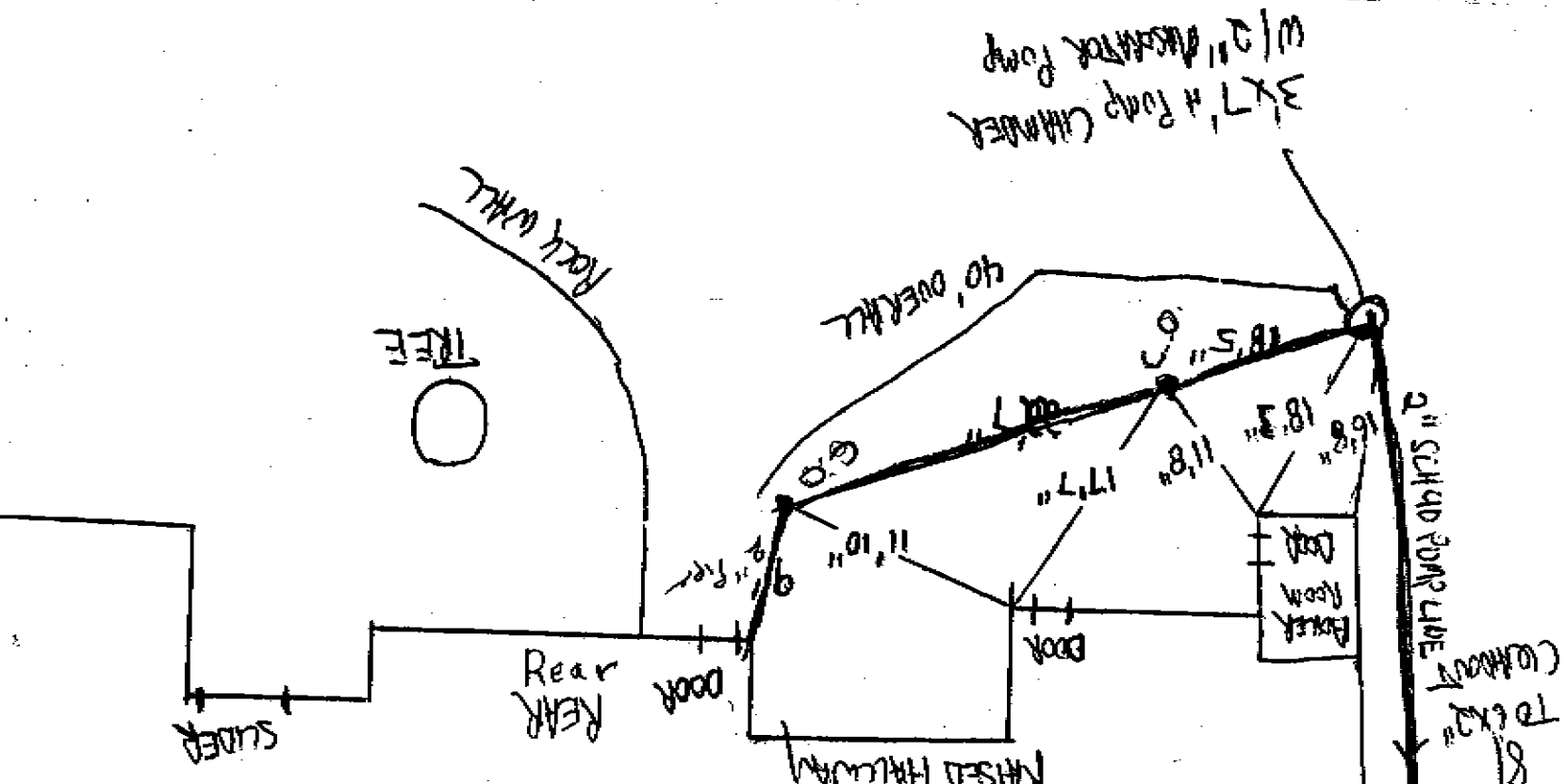
DATE \_\_\_\_\_

Sketch of Service Here Pump Chamber



Connection made in Moon Hill Rd Street. Work completed 10/15/06. Arlex Corp. Remarks: See Attachment for Tics





3x7' H RODS CHAMBER  
w/ 2" DISSIMILAR PUMP

Rock Wall  
TREE

40' OVERHILL

2" SCH 40 PUMP PIPE

8' To EX-20 (COMMON)

#36 MOONHILL ROAD LEX 10-15-06 (SM)

#36 MOONHILL ROAD LEX. FRONT ALL UNITS

10-15-06 (SM)

RAISED HALLWAY