

Name Donna Realty Trust

Service No. 81

Address 70 Grassland St.

Location

Lot 178

Kind of Pipe

Size

Size of Main

~~Repair/Replace~~ New Service W.O. # 6715 Valeri #1434

Location SEP 2 1969

Date		Material	Amount	Total		Date		Amount
8-19-69		Labor	137 92			8-5-69	Deposit	200 00
		10% O.H.	13 79	151	71	9-2-69	Paid by WPC# 35	26 48
	25'	6" Transite pipe	.88	22	00			224 48
	1	90° Elbow		4	09	8-19-69		
	93/4	Ton stone	1.65	15	68		25' 6" Transite	
	4	Hrs. Shovel	6.50	26	00		1 6"-90° Elbow	
	2	" Trucking	1.50	3	00			
	4	" Pump	1.00	4	00			
				226	48			
8-21-69	35'	6" Transite pipe						
	10'	4" C.I. Pipe						

DATE _____

TOWN OF LEXINGTON — BOARD OF PUBLIC WORKS

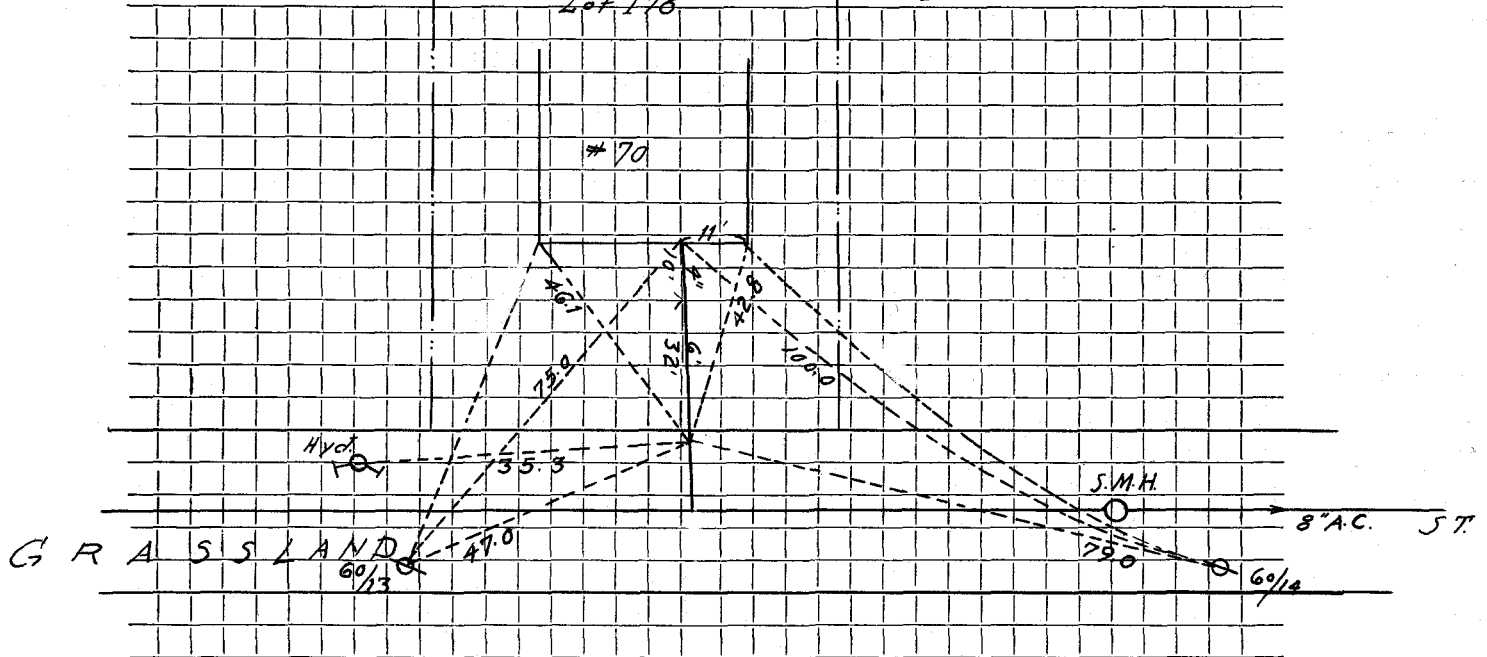
SEWER DIVISION

Sketch of Service Here

70

Lot 178

#70



Connection made in Street. Work completed

Remarks:

.....

.....