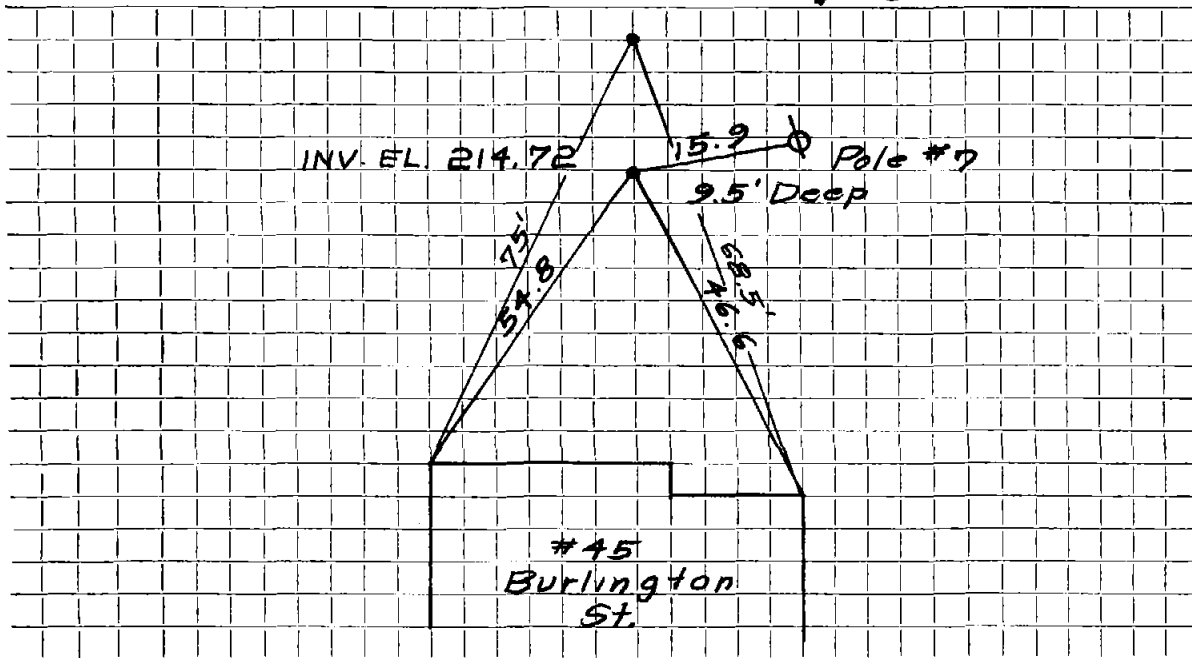


DATE _____

TOWN OF LEXINGTON — BOARD OF PUBLIC WORKS
SEWER DIVISION

Sketch of Service Here

45



Connection made in Street. Work completed

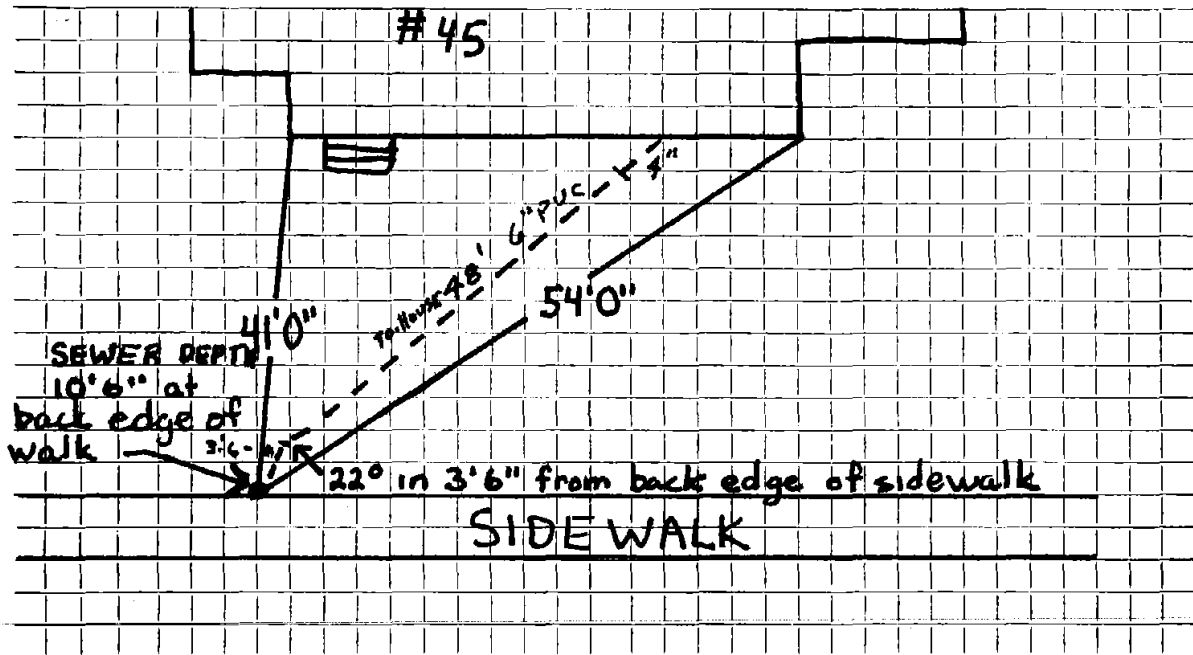
Remarks:

.....
.....

DATE 7-20-98

TOWN OF LEXINGTON — BOARD OF PUBLIC WORKS
SEWER DIVISION

Sketch of Service Here



Connection made in back edge of sidewalk Work completed Chris LAMICANO / N.S.P.

Remarks: The depth of sewer at back edge of sidewalk is 10'6" there is a 22° bend in 3'6" from back edge of sidewalk.