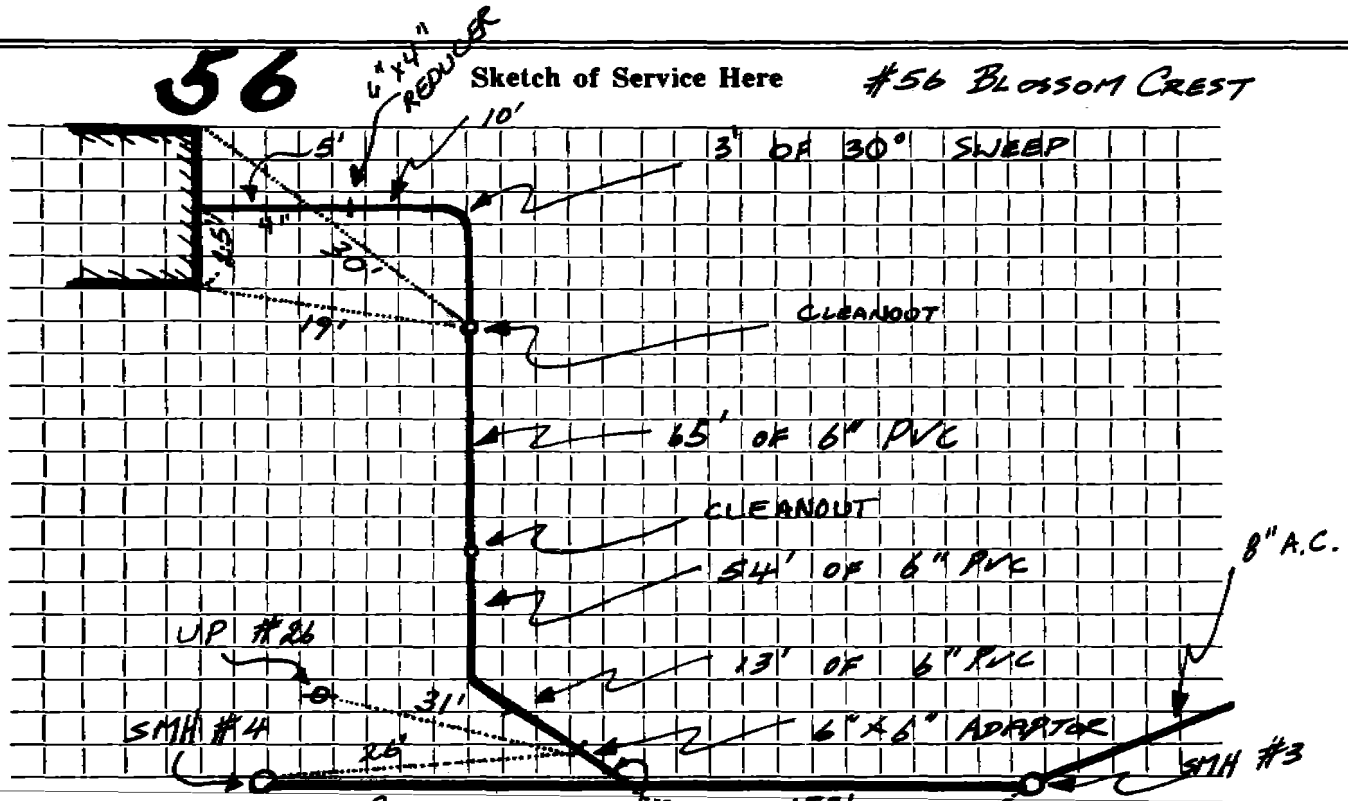




DATE 10-3-'89

TOWN OF LEXINGTON — BOARD OF PUBLIC WORKS  
SEWER DIVISION



Connection made in ~~BLOSSOM CREST~~ BLOSSOM CREST Sect. 25' Work completed 152'

Remarks: INSPECTED 10-3-'89 BY MB INSTALLED BY VALERIE