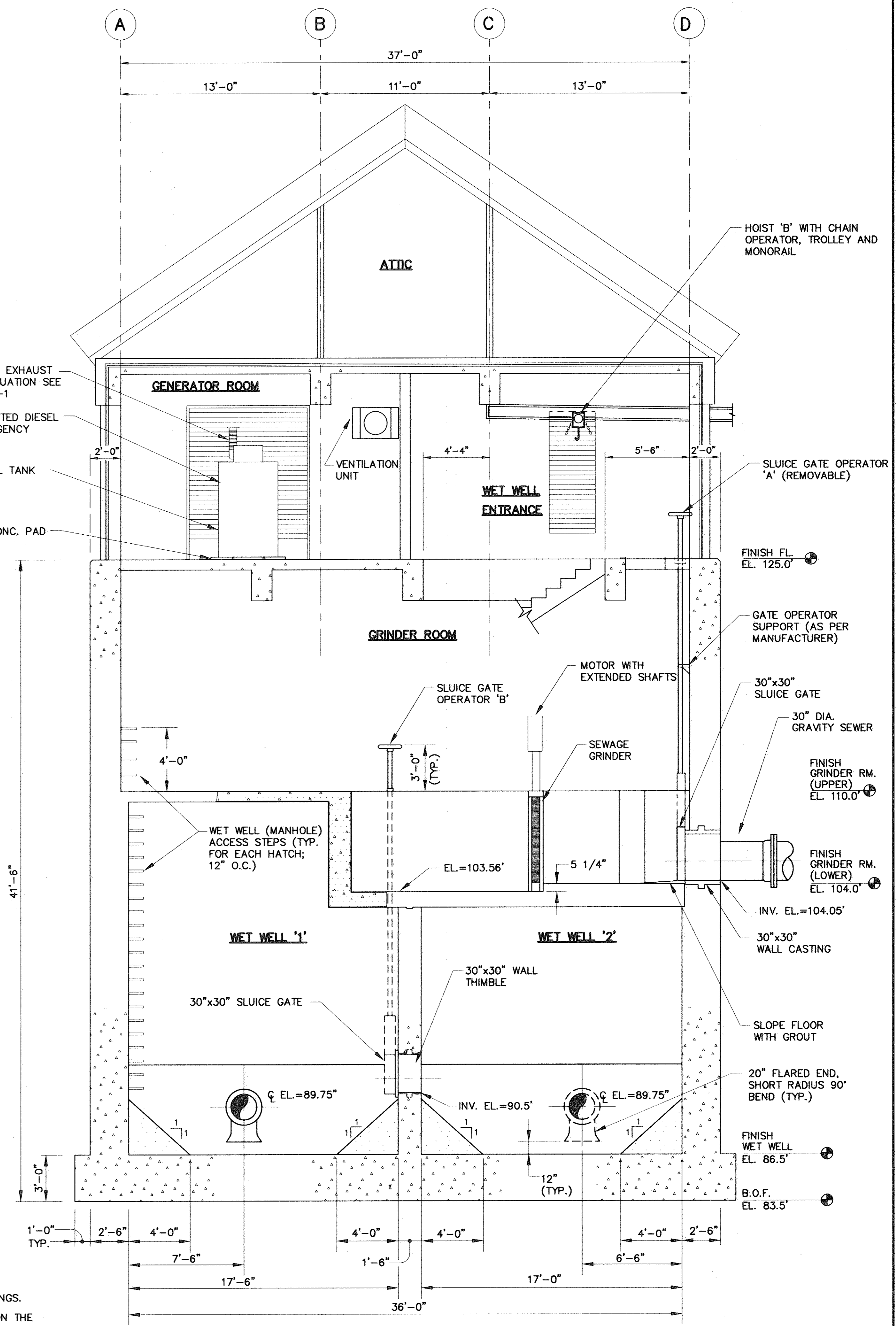


**PLAN - LOWER LEVEL (EL. 87.0')**  
SCALE: 1/4"=1'-0"

- NOTES:**
1. ALL BENDS, TEES, CROSSES, GATE VALVES, CHECK VALVES, AND REDUCERS TO BE SUPPORTED ON CONCRETE PEDESTALS.
  2. PROVIDE A CONCRETE PEDESTAL ON EACH SIDE OF FLEXIBLE COUPLINGS.
  3. THE 20-INCH FLEXIBLE COUPLING ON THE DISCHARGE HEADER PIPE SHALL BE RESTRAINED AND TIED BACK TO 20-INCH x 20-INCH REDUCING WYES ON BOTH SIDES OF THE COUPLING BY THE USE OF THE RODS AS RECOMMENDED BY THE COUPLING MANUFACTURER

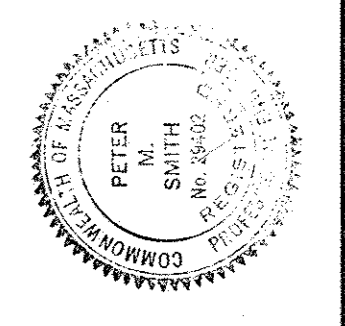


**SECTION 2**  
SCALE: 1/4"=1'-0"

**RECORD DRAWING**

REVISIONS		DATE	
No.	Description	By	Date
2	5/95 M.R.K. M.L.M. F.W.Y. REVISED FOR RECORD DRAWING		
1	7/91 S.G.I. M.L.M. P.M.S. GENERAL REVISIONS		

APPROVED: *Peter M. Smith*  
REGISTERED PROFESSIONAL ENGINEER



TOWN OF LEXINGTON, MASSACHUSETTS  
DEPARTMENT OF PUBLIC WORKS  
NORTH LEXINGTON MAIN PUMPING STATION

**LOWER LEVEL PLAN AND SECTION**

SCALE: NOTED  
CONTRACT: 92-1  
JOB NO: 9065  
DR BY: S.M.L.  
CHK BY: M.L.M.  
APP BY: P.M.S.