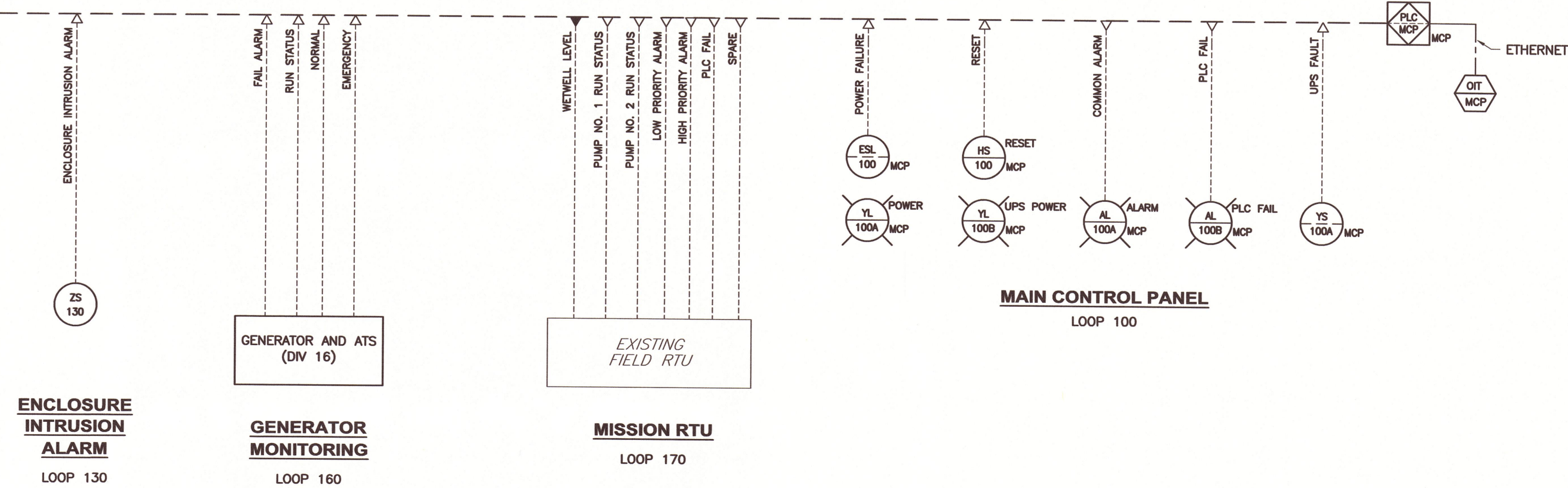


WETWELL LEVEL
LOOP 110

SEWAGE PUMPS
(TYP OF 2)

SEWAGE PUMP NO. 1 (SP-120): ## = 120
SEWAGE PUMP NO. 2 (SP-121): ## = 121

- NOTES:**
1. PROVIDE AN INTRINSICALLY SAFE BARRIER ENCLOSURE ADJACENT TO MCP.
 2. INTRINSICALLY SAFE RELAYS (ISR) TO BE POWERED BY DIV 11.



ENCLOSURE INTRUSION ALARM
LOOP 130

GENERATOR MONITORING
LOOP 160

MISSION RTU
LOOP 170

MAIN CONTROL PANEL
LOOP 100

THESE RECORD DRAWINGS HAVE BEEN PREPARED, IN PART, ON THE BASIS OF THE INFORMATION COMPILED AND FURNISHED BY OTHERS. THE ENGINEER WILL NOT BE RESPONSIBLE FOR ANY ERRORS OR OMISSIONS WHICH HAVE BEEN INCORPORATED INTO THIS DOCUMENT AS A RESULT.

NO.	ISSUED FOR BID	DATE
1	ISSUED FOR BID	11/14
2	RECORD DRAWINGS	07/16

DESIGNED BY: AJM
 CAD COORD: SCV
 CHECKED BY: JP
 DATE: 11/13/14
 APPROVED BY: JP
 DATE: 11/14/14
 PROJECT NO: 12938A

WRIGHT-PIERCE
 Engineering a Better Environment
 Offices Throughout New England
 888.621.8156 | www.wright-pierce.com

TOWN OF LEXINGTON, MA
 BRIGHAM ROAD WASTEWATER
 PUMP STATION UPGRADE

DRAWING
 I-2

INSTRUMENTATION LOOPS