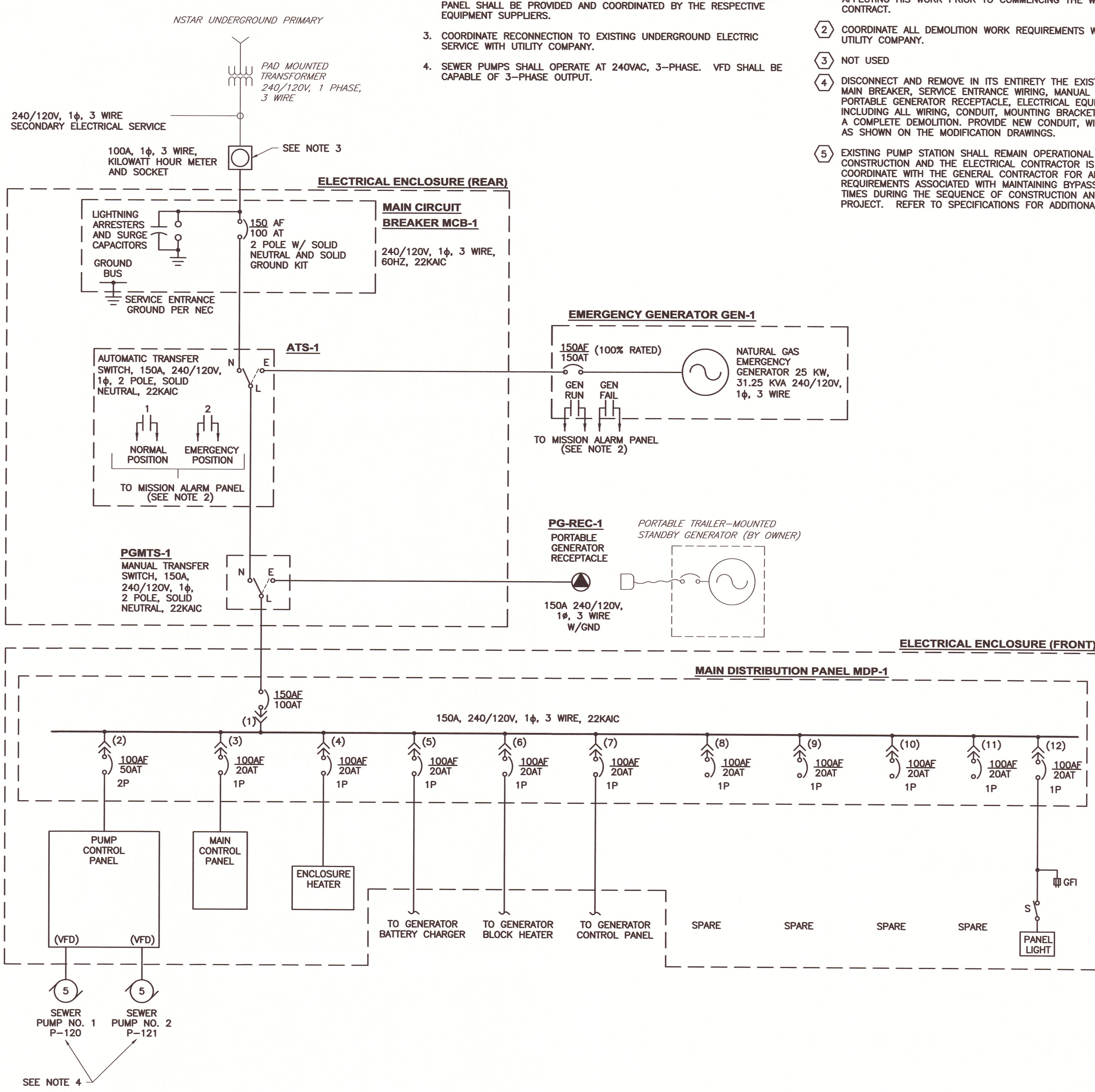
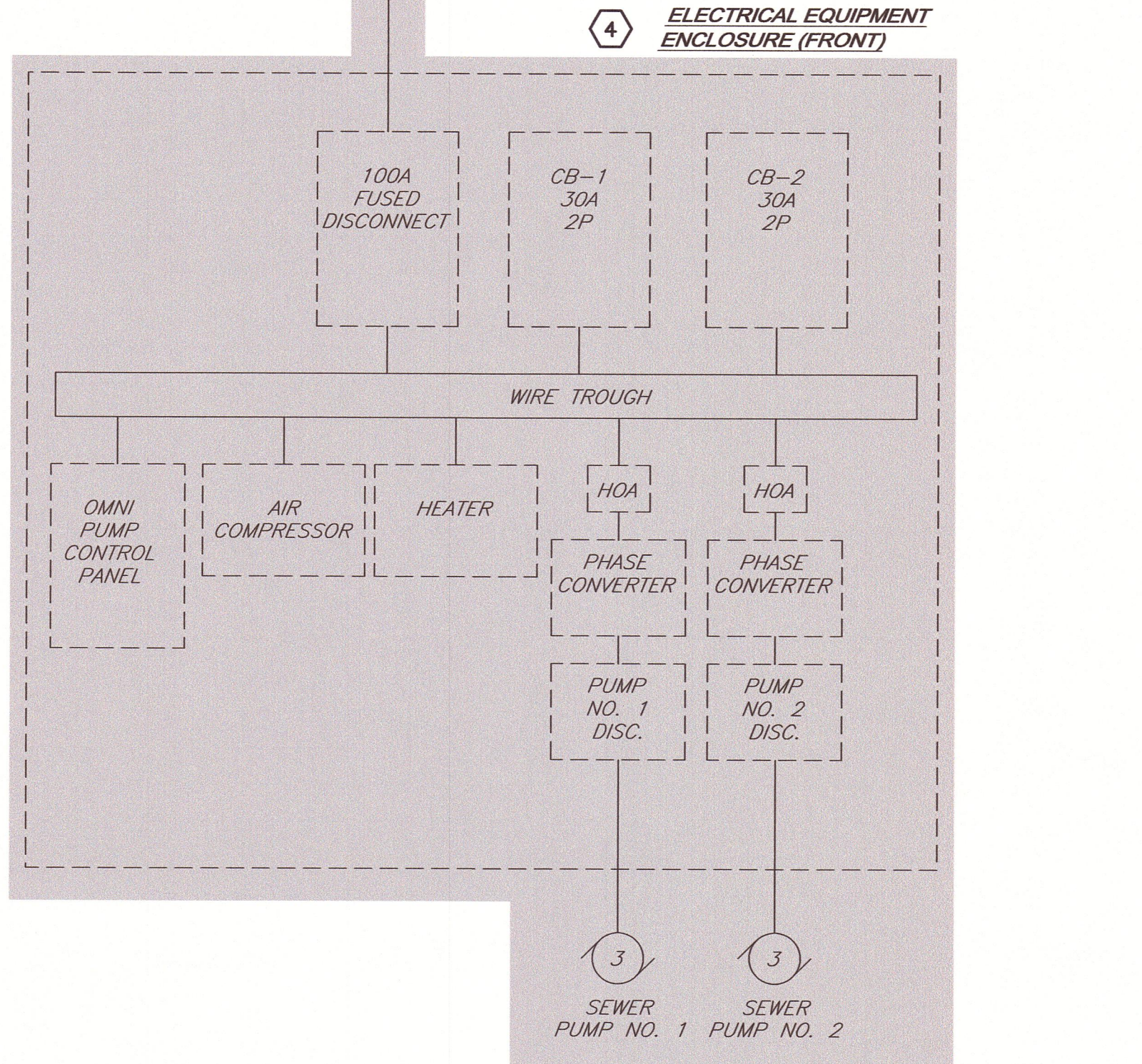
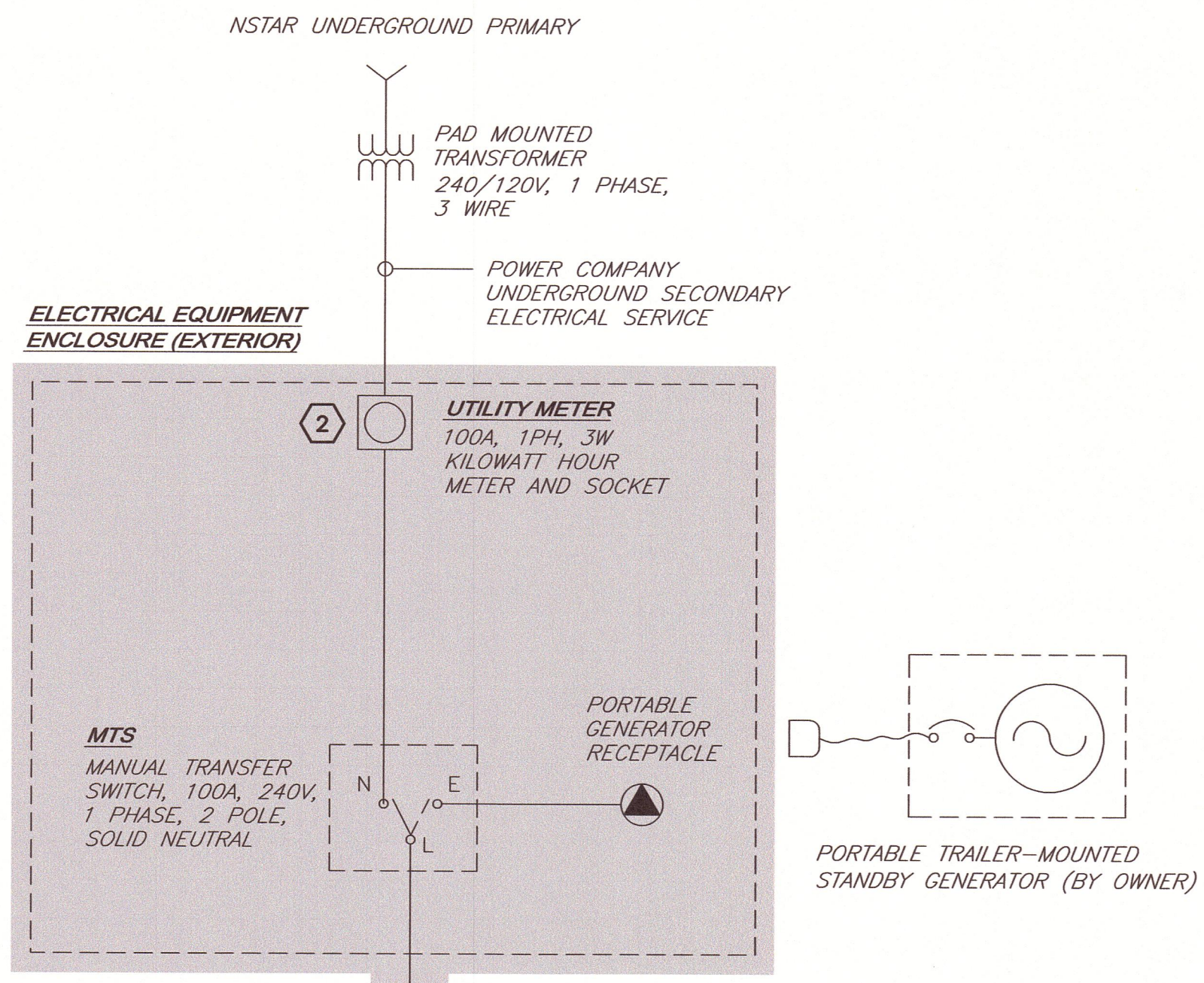


G:\DWGS\MA\LEXINGTON\12938-BRIGHAM ROAD PS\12938-RD\ELE\12938A-ES-ONELINES - BRIGHAM-ONELINES.DWG | 1:10.1236 | 7/28/2016 4:39:58 PM | DON.SAVAGE | 7/28/2016 4:35 PM



- MODIFICATION NOTES:**
- FOR ELECTRICAL LEGEND, ABBREVIATIONS, NEMA CLASSIFICATIONS AND NOTES, REFER TO DRAWINGS E-1.
 - AUXILIARY DRY CONTACTS SHOWN TO BE SENT TO THE MISSION ALARM PANEL SHALL BE PROVIDED AND COORDINATED BY THE RESPECTIVE EQUIPMENT SUPPLIERS.
 - COORDINATE RECONNECTION TO EXISTING UNDERGROUND ELECTRIC SERVICE WITH UTILITY COMPANY.
 - SEWER PUMPS SHALL OPERATE AT 240VAC, 3-PHASE. VFD SHALL BE CAPABLE OF 3-PHASE OUTPUT.

- DEMOLITION NOTES:**
- INFORMATION CONTAINED IN THESE PLANS HAS BEEN OBTAINED IN PART FROM EXISTING PUMP STATION ELECTRICAL DRAWINGS AND SITE SURVEYS. THE CONTRACTOR SHALL FIELD VERIFY ALL INFORMATION AND CIRCUITRY AFFECTING HIS WORK PRIOR TO COMMENCING THE WORK FOR THIS CONTRACT.
 - COORDINATE ALL DEMOLITION WORK REQUIREMENTS WITH THE RESPECTIVE UTILITY COMPANY.
 - NOT USED
 - DISCONNECT AND REMOVE IN ITS ENTIRETY THE EXISTING UTILITY METER, MAIN BREAKER, SERVICE ENTRANCE WIRING, MANUAL TRANSFER SWITCH, PORTABLE GENERATOR RECEPTACLE, ELECTRICAL EQUIPMENT ENCLOSURE, INCLUDING ALL WIRING, CONDUIT, MOUNTING BRACKETS AND HARDWARE FOR A COMPLETE DEMOLITION. PROVIDE NEW CONDUIT, WIRING AND EQUIPMENT AS SHOWN ON THE MODIFICATION DRAWINGS.
 - EXISTING PUMP STATION SHALL REMAIN OPERATIONAL AT ALL TIMES DURING CONSTRUCTION AND THE ELECTRICAL CONTRACTOR IS RESPONSIBLE TO COORDINATE WITH THE GENERAL CONTRACTOR FOR ALL ELECTRICAL REQUIREMENTS ASSOCIATED WITH MAINTAINING BYPASS PUMPING AT ALL TIMES DURING THE SEQUENCE OF CONSTRUCTION AND DURATION OF THIS PROJECT. REFER TO SPECIFICATIONS FOR ADDITIONAL REQUIREMENTS.

THESE RECORD DRAWINGS HAVE BEEN PREPARED, IN PART, ON THE BASIS OF THE INFORMATION COMPILED AND FURNISHED BY OTHERS. THE ENGINEER WILL NOT BE RESPONSIBLE FOR ANY ERRORS OR OMISSIONS WHICH HAVE BEEN INCORPORATED INTO THIS DOCUMENT AS A RESULT.

DESIGNED BY: LJC	ISSUED FOR: BID	NO.	DATE
CAD COORD: SCV	RECORD DRAWINGS		
CAD: LJC			
CHECKED BY: SAL			
DATE: 11/23/14			
APPROVED BY: SAL			
DATE: 11/14/14			
PROJECT NO: 12938A			

WRIGHT-PIERCE
 Engineering a Better Environment
 Offices Throughout New England | www.wright-pierce.com
 888.621.8156

TOWN OF LEXINGTON, MA
 BRIGHAM ROAD WASTEWATER
 PUMP STATION UPGRADE

SINGLE LINE DIAGRAMS
 DRAWING
 E-2