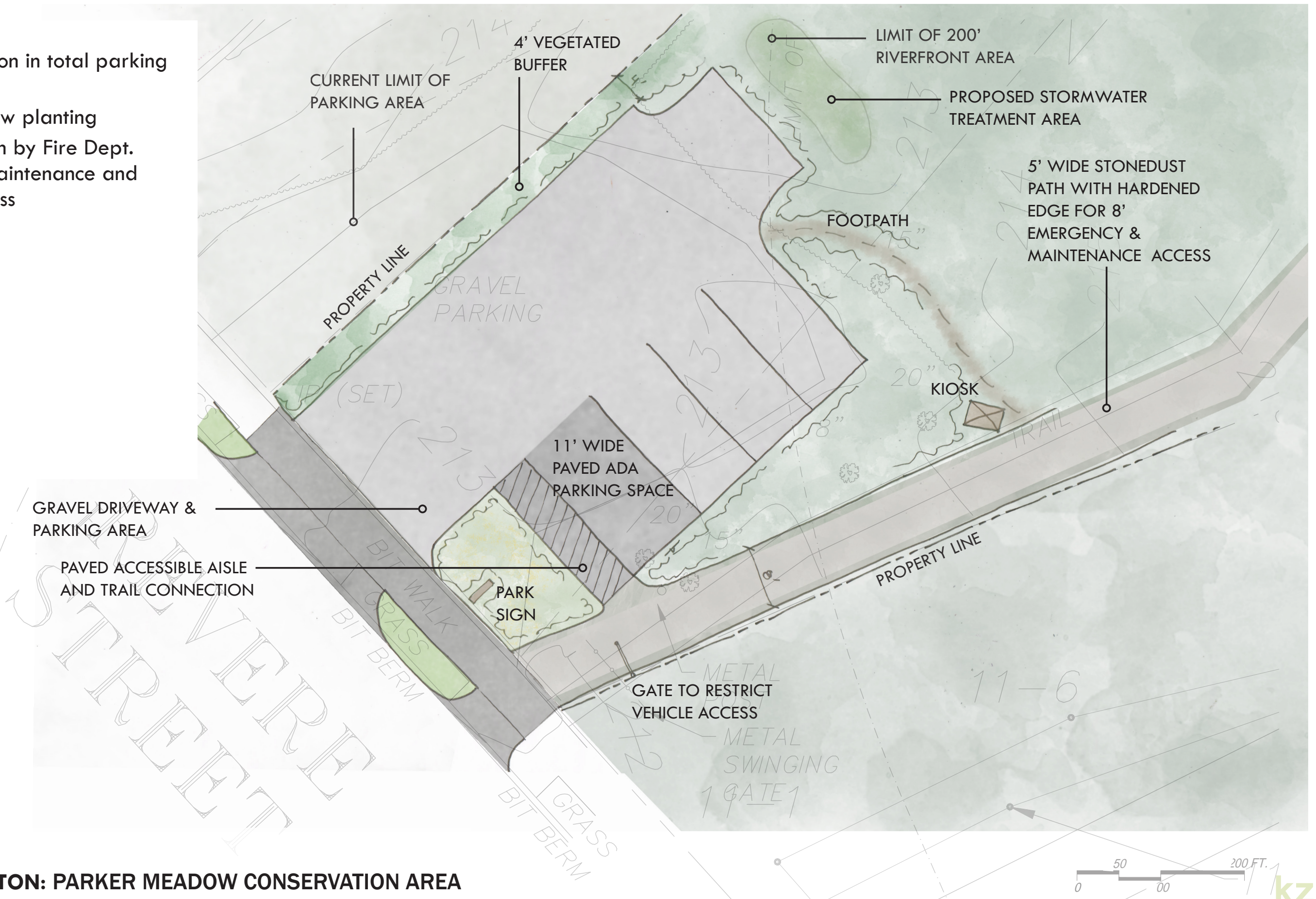


PROPOSED PARKING & ENTRANCE PLAN

Details

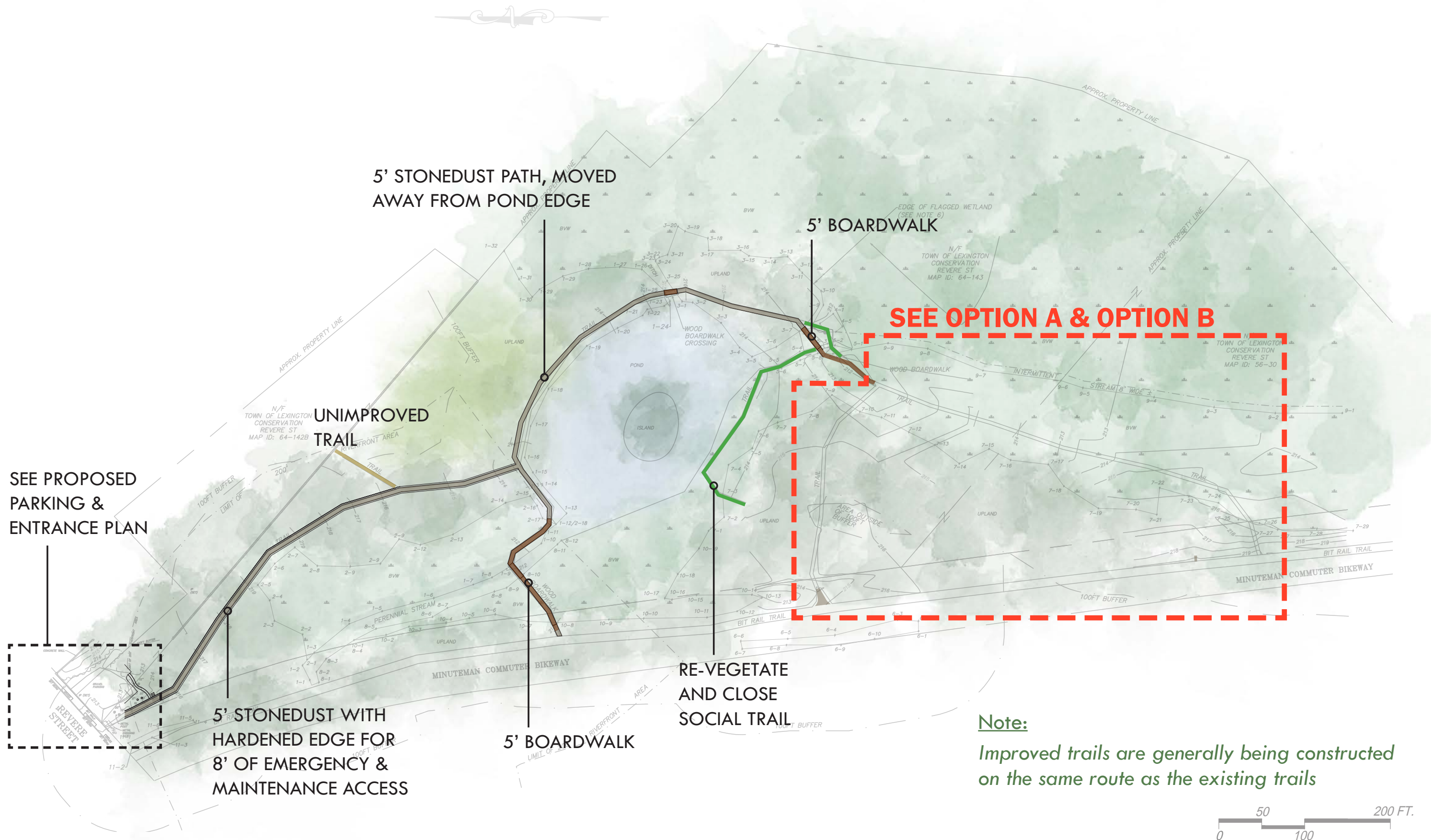
- 95 sq. ft reduction in total parking area
- 680 sq. ft. of new planting
- Preferred design by Fire Dept. and DPW for maintenance and emergency access



02/18/2020

TOWN OF LEXINGTON: PARKER MEADOW CONSERVATION AREA

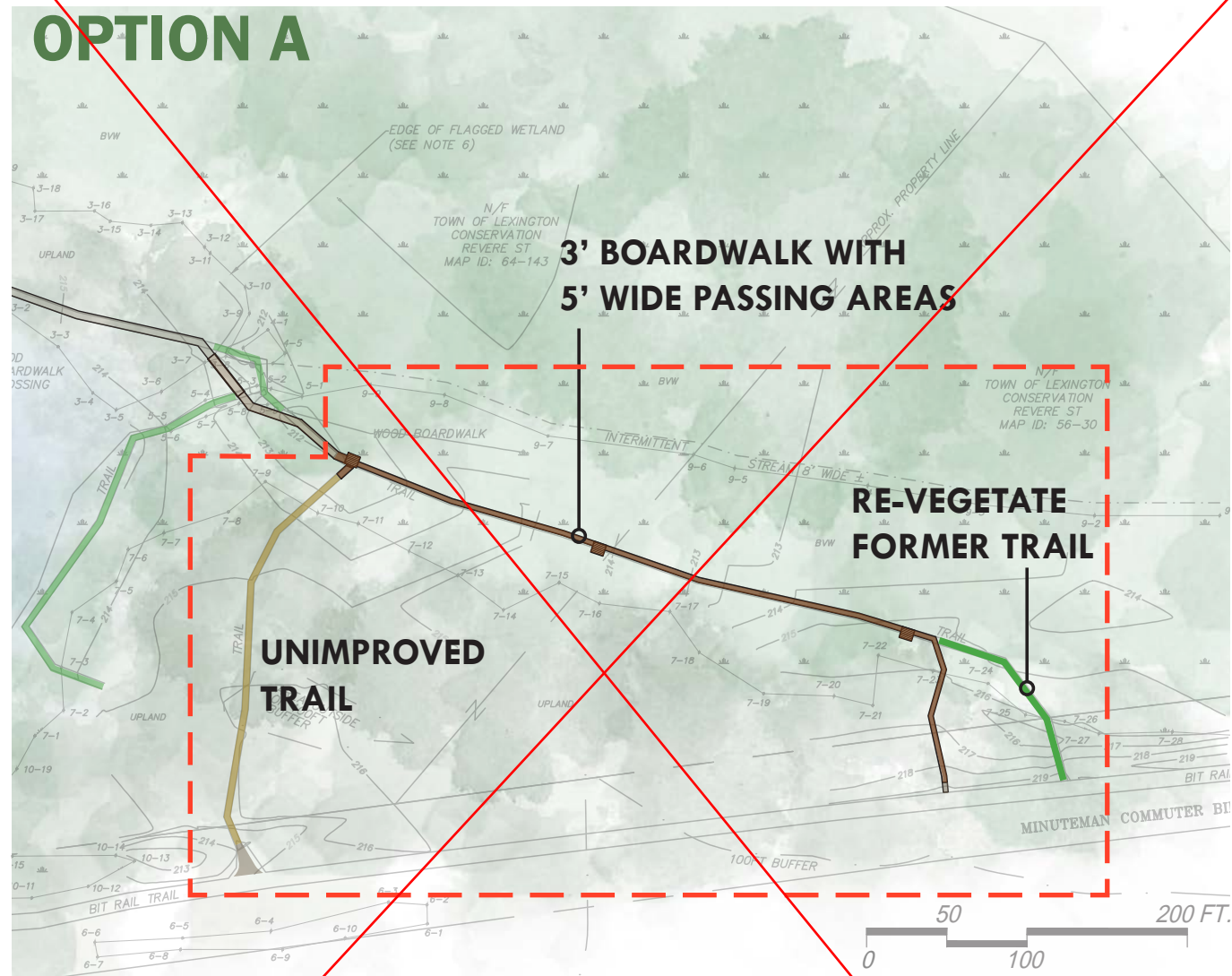
PROPOSED TRAIL IMPROVEMENTS - OVERVIEW



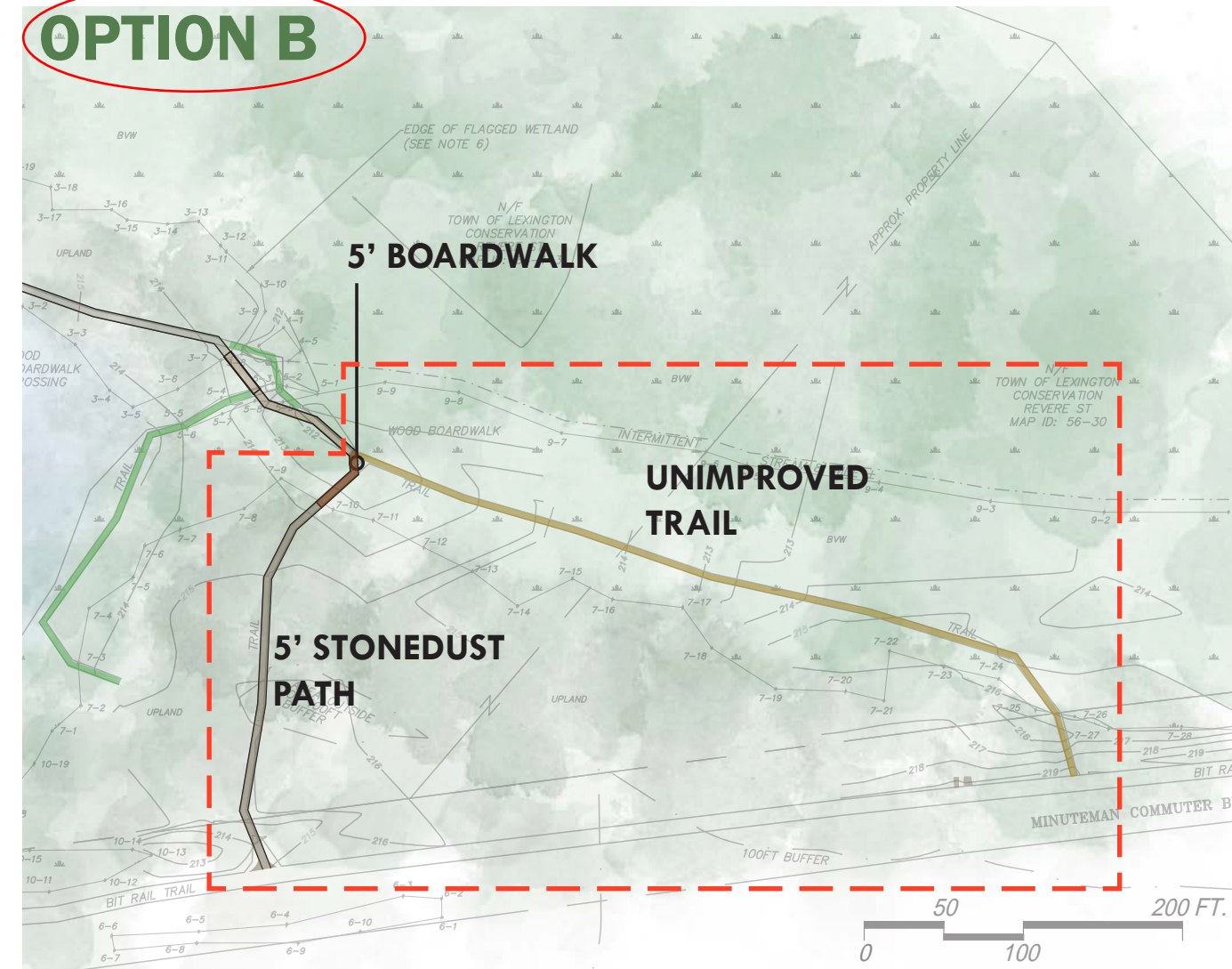
PROPOSED TRAIL SYSTEM OPTIONS

	TRAIL LENGTH	TRAIL LENGTH IN WETLAND
EXISTING TRAILS (SITEWIDE)	2570 LF	865 LF
EXISTING TRAILS IN DASHED AREA	796 LF	510 LF
OPTION A IMPROVED/ACCESSIBLE TRAILS (ONLY)	500 LF	412 LF
OPTION B IMPROVED/ACCESSIBLE TRAILS (ONLY)	288 LF	28 LF

LF=LINEAR FEET

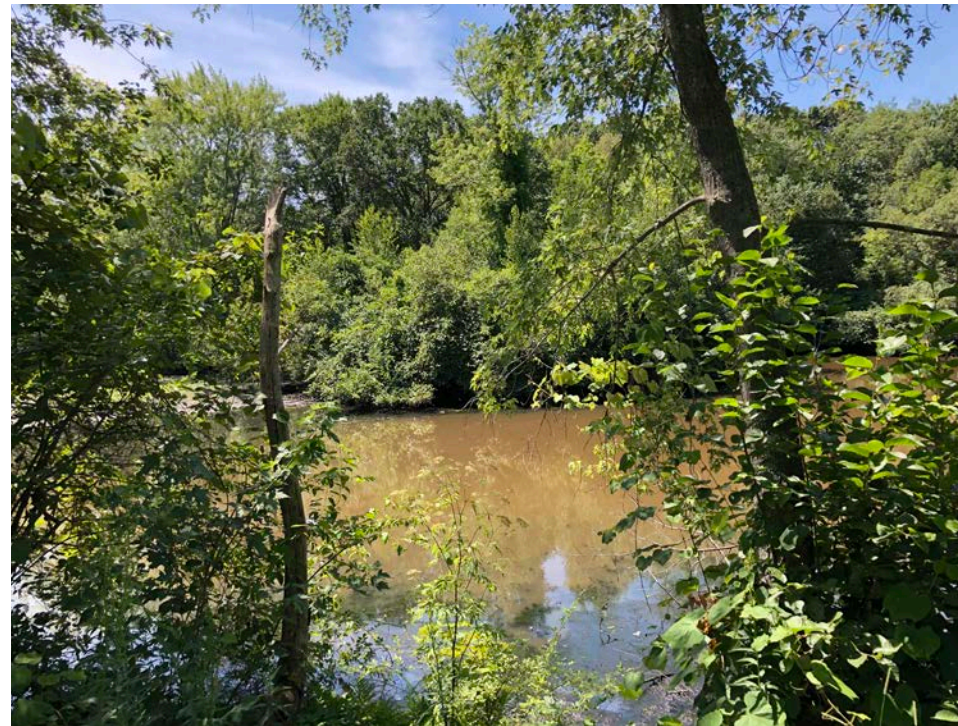


- + Creates a grand total of 1910 linear feet of accessible trails
- + Re-vegetates 130 linear feet of former trail; 90 linear feet of that is within the wetland
- + Unimproved trail is primarily in an upland area
- Adds boardwalk in 100' linear feet of previously undisturbed land



- + Creates a grand total of 1697 linear feet of accessible trails
- + Stonedust portion of Option B is within an upland area of the property
- + More cost-effective
- Users of the long unimproved trail will experience seasonally wet conditions, and will continue to compact soils

PROPOSED OVERLOOK OPTIONS



OVERLOOK OPTION A

- New structure, at intersection of paths
- Provides a central location
- No direct pond access
- Approx. size of 15'x10'
- Platform will obstruct the view of the pond from the main entrance path

- Can accommodate benches and an interpretive sign
- Will require 42" high guardrail
- Pondsides location generally remains inundated, except in extreme dry periods
- Location gets more sun; Hot in summer, warm in winter
- May require more clearing of undisturbed area

OVERLOOK OPTION B

- Widens bridge as overlook
- Provides a more intimate location
- No direct pond access
- Approx. size of 15'x10'
- Preserves view of the pond from the main entrance path

- Can accommodate benches and an interpretive sign
- Will require 42" high guardrail; Seatbacks may be able to act as the guardrail.
- Pondsides location can be muddy when water levels are low
- Location gets more shade; Cool in summer, some warmth in winter
- Expands an existing structure, creating less environmental impact



OVERLOOK OPTION A

