

SP=species at risk

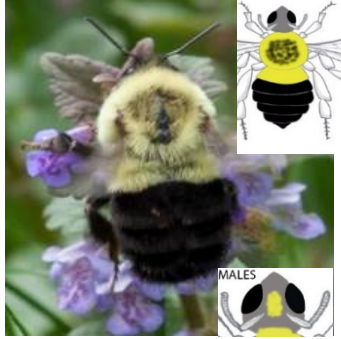
A=abundant

BUMBLEBEE SPECIES ID GUIDE

RJ Gegear (rgegear@umassd.edu)

LE=low elevation
HE=high elevation
LH=low/high elevation

Bombus impatiens A, LH



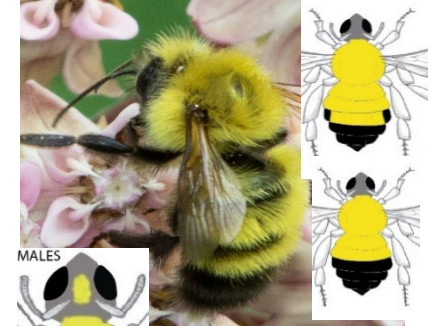
Bombus griseocollis A, LH



Bombus bimaculatus A, LH



Bombus perplexus A, LH



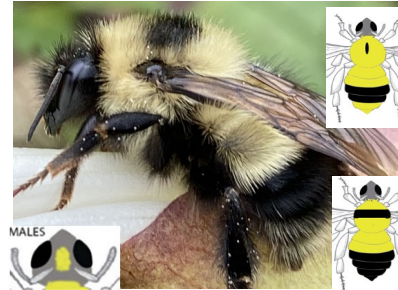
Bombus terricola SP, HE



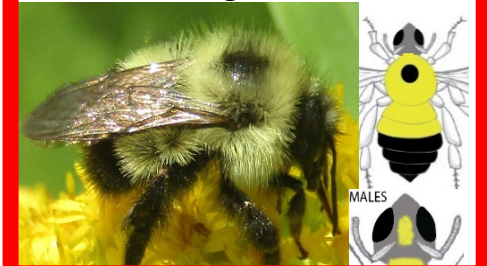
Bombus affinis SP, LH



Bombus sandersoni LH



Bombus vagans SP, LH



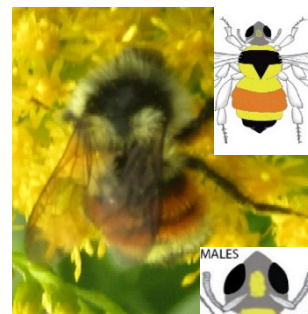
Bombus fervidus SP, LH



Bombus borealis A, HE



Bombus ternarius A, HE



Bombus pennsylvanicus SP, LE

